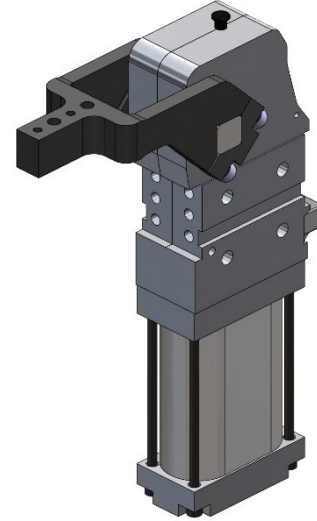




夹紧气缸 CPL50/63 Pneumatic clamp CPL50/63

主要特点:

- 铝制外壳
- 曲柄连杆原理
- 打开角度容易调整
- 顶部检测销检测最终位置
- 多种铁夹臂可选 V 和 H
- 4 个安装面 (前后左右)
- 2 个不同缸径可选: 50 和 63 mm
- 2 个 G1/4" 气源接口
- 电感式传感器 (M12x1 接口)
- 带手动机构可选
- 外部夹臂硬限位 (可选)



Main characteristics:

- Aluminum flanks
- Toggle action mechanism
- Opening angle easily adjustable
- Checking pin for verifying the end position
- Versatile iron steel arms V and H
- 4 mounting areas (front, back, on the sides)
- 2 different pneumatic cylinder bores: 50 and 63 mm
- 2 feeding ports G1/4"
- Inductive proximity switch (connection M12x1)
- Hand lever



[PDF](#)

[3D Step](#)

[Index](#)

索引. Index.

页码 Page	描述 Description	
1	主要特点 / Main characteristics	
2	订货举例 / Ordering example	
3 - 4	尺寸页码 Dimensional page	CPL50-V1... / CPL50-H1...
5 - 6		CPL50-V1...S / CPL50-H1...S
7 - 8		CPL50-V3... / CPL50-H3...
9 - 10		CPL50-V3...S / CPL50-H3...S
11 - 12		CPL63-V1... / CPL63-H1...
13 - 14		CPL63-V1...S / CPL63-H1...S
15 - 16		CPL63-V3... / CPL63-H3...
17 - 18		CPL63-V3...S / CPL63-H3...S
19 - 20		CPLM50/63 V1... / CPLM50/63 H1...
21 - 22		CPLM50/63 V1...S / CPLM50/63 H1...S
23 - 24		CPLM50/63 V3... / CPLM50/63 H3...
25 - 26	CPLM50/63 V3...S / CPLM50/63 H3...S	
27 - 28	图表 / Diagrams	
29	图表 Diagrams	M12 电感式接近开关 M12 Inductive proximity switch
		气路图 / Pneumatic plan
30	使用说明 Operating instructions	打开角度调整 Opening angle change
		AL 防掉落机构 AL Retaining clip
31 - 32	附件 Accessories	外部夹臂硬限位 External arm hard stop
33	备件 / Spare parts	
34	备注 / Notes	



订货举例.

Ordering example.

CPL50 LA V1C I1 G - 107

型号和气缸缸径:
Model and cylinder bore

CPL50
标准夹紧气缸 CPL
缸径 Ø50mm
standard clamp CPL
cylinder bore Ø50mm

CPLM50
标准夹紧气缸 CPL 带手动机构
缸径 Ø50mm
standard clamp CPL with
hand lever cylinder bore
Ø50mm

CPL63
标准夹紧气缸 CPL
缸径 Ø63mm
standard clamp CPL
cylinder bore Ø63mm

CPLM63
标准夹紧气缸 CPL 带手动机构
缸径 Ø63mm
standard clamp CPL with
hand lever cylinder bore
63mm



接近开关:
Proximity switch:

X: 无接近开关
without proximity switch

I1: VEP 标准电感式接近开关 (0°)
inductive proximity switch VEP standard (0°)

I2: VEP 电感式接近开关 (90°)
inductive proximity switch VEP (90°)



气源接口类型:
Feeding ports type:

G: G 1/4"接口
ports type G 1/4"

N: 1/4" NPT 接口
ports type 1/4" NPT



调整打开角度:
Adjustable opening angle:

	从	至	标准
V...	2,5°	135°	122°
H...	2,5°	107°	107°
V1...S	2,5°	16°	16°
V3...S	2,5°	26°	26°
H...S	2,5°	75°	75°

如未标明, 气缸将按标准角度供货。
If not indicated, the clamp will be provided with the standard opening angle.

夹臂类型:
Type of arm:

XXX: 无夹臂
without arm

V1C, V1D e V1S (参见第 3、11 页) (see page 3&11)

H1C, H1D e H1S (参见第 4、12 页) (see page 4&12)

V1CS, V1DS e V1SS (参见第 5、13 页) (see page 5&13)

H1CS, H1DS e H1SS (参见第 6、14 页) (see page 6&14)

V3C, V3D e V3S (参见第 7、15 页) (see page 7&15)

H3C, H3D e H3S (参见第 8、16 页) (see page 8&16)

V3CS, V3DS e V3SS (参见第 9、17 页) (see page 9&17)

H3CS, H3DS e H3SS (参见第 10、18 页) (see page 10&18)

备注: 可以通过调整夹臂的安装方向把夹臂 V 改成 H。
NOTE: It's possible to transform the clamp type V... into the type H... simply changing the arm position.

可选型号 CPL "I", 带外部夹臂硬限位 (参见第 32 页)
Available version CPL "I" with external arm hard stop (see page 32)



手动机构位置:
(仅适用于 CPLM...)

Hand lever position:
(specify only for CPLM... type)

LX: 手柄原配位置
lever arrangement

LA: 手柄在左侧
left lever

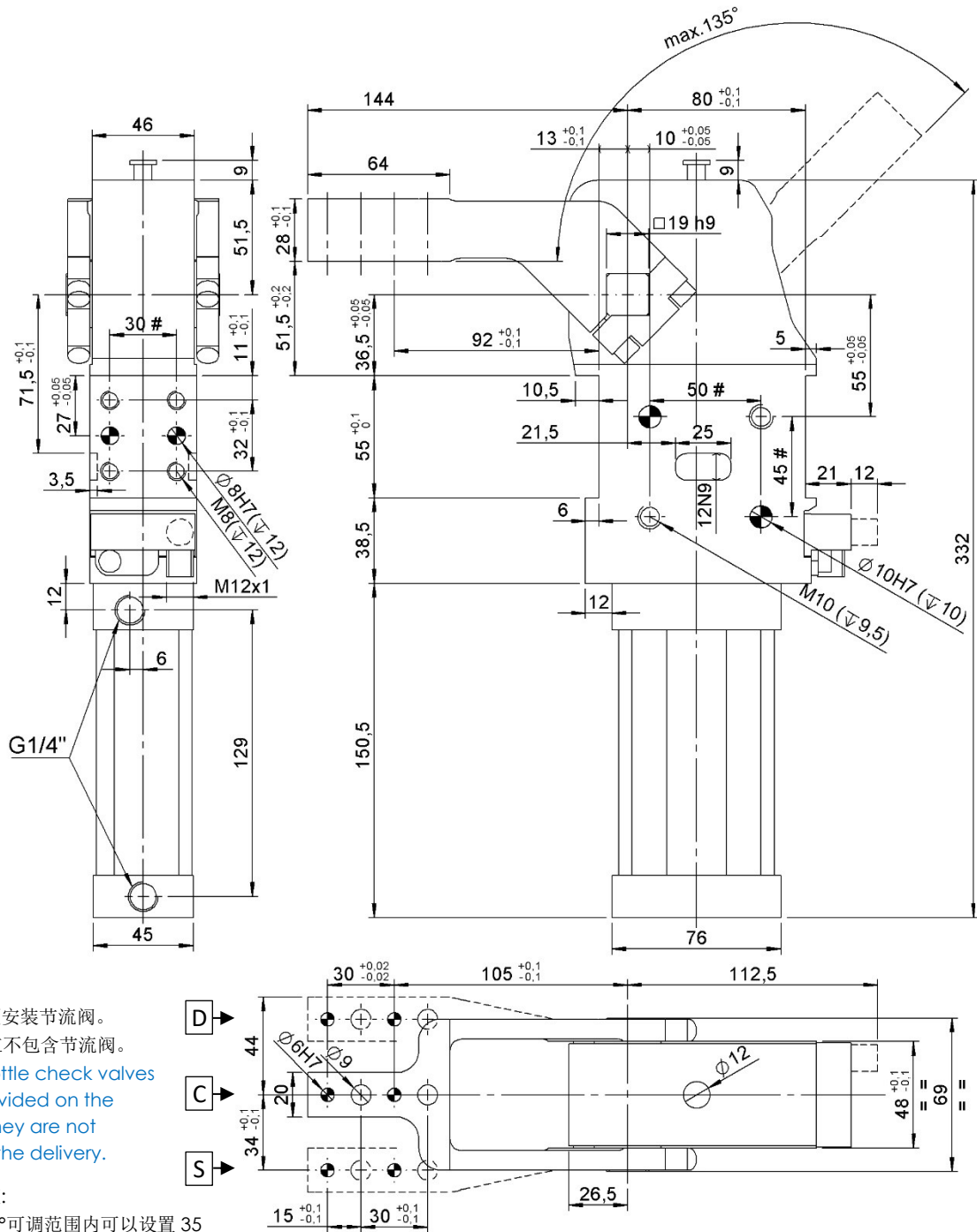
LB: 手柄在右侧
right lever





CPL50 V1...

夹紧气缸, D.50, 打开角度可调, 夹臂垂直安装, 夹臂高度 15mm
 Clamp, D.50, Vario Op. Angle, Vertical arm, Offset 15



气缸外部必须安装节流阀。
 VEP 供应气缸不包含节流阀。
 External throttle check valves must be provided on the assembly. They are not included in the delivery.

标准打开角度：
 在 2,5° ~ 135° 可调范围内可以设置 35 个角度位置。

Standard opening angles:
 settable in 35 different positions in a range between 2,5° and 135°.

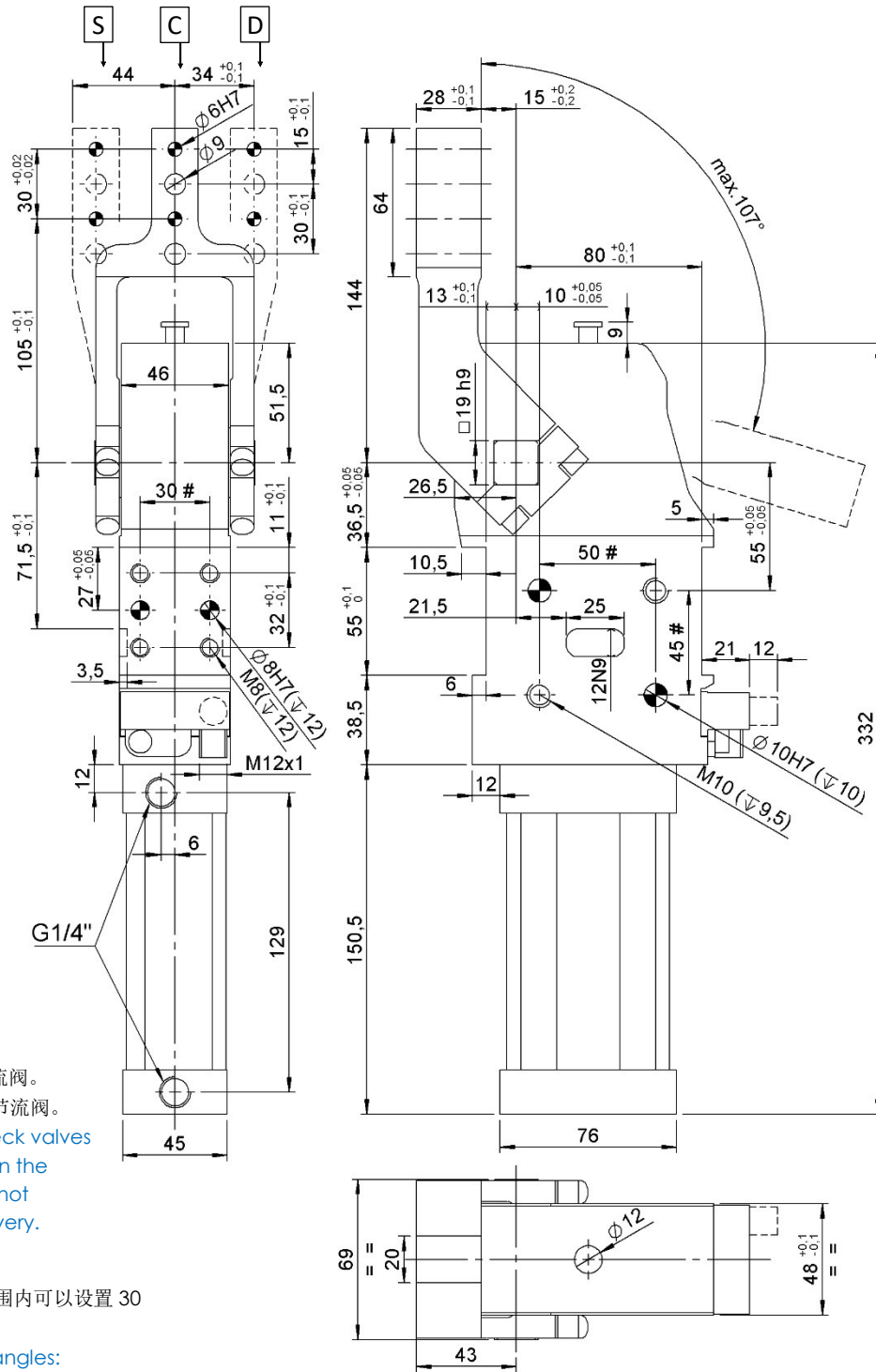
公差: 定位销孔 ±0.02, 螺纹孔 ±0.1
 # Tolerances: dowel holes ±0.02, screw holes ±0.1

类型 Type	缸径 Cylinder bore	保持力 Holding moment	重量 Weight	工作气压 Working pressure	最大夹紧扭矩 Clamping max. torque (5 bar)	耗气量 Air consumption (5 bar)
	[mm]	[Nm]	[Kg]	[bar]	[Nm]	[l]
CPL50 V1...	50	1300	~ 4	4 - 8	250	3,0



CPL50 H1...

夹紧气缸, D.50, 打开角度可调, 夹臂水平安装, 夹臂高度 15mm
Clamp, D.50, Vario Op. Angle, Horizontal arm, Offset 15



气缸外部必须安装节流阀。
VEP 供应气缸不包含节流阀。
External throttle check valves must be provided on the assembly. They are not included in the delivery.

标准打开角度：
在 2.5° ~ 107° 可调范围内可以设置 30 个角度位置。

Standard opening angles:
settable in 30 different positions in a range between 2.5° and 107°.

#公差: 定位销孔 ±0.02, 螺纹孔 ±0.1

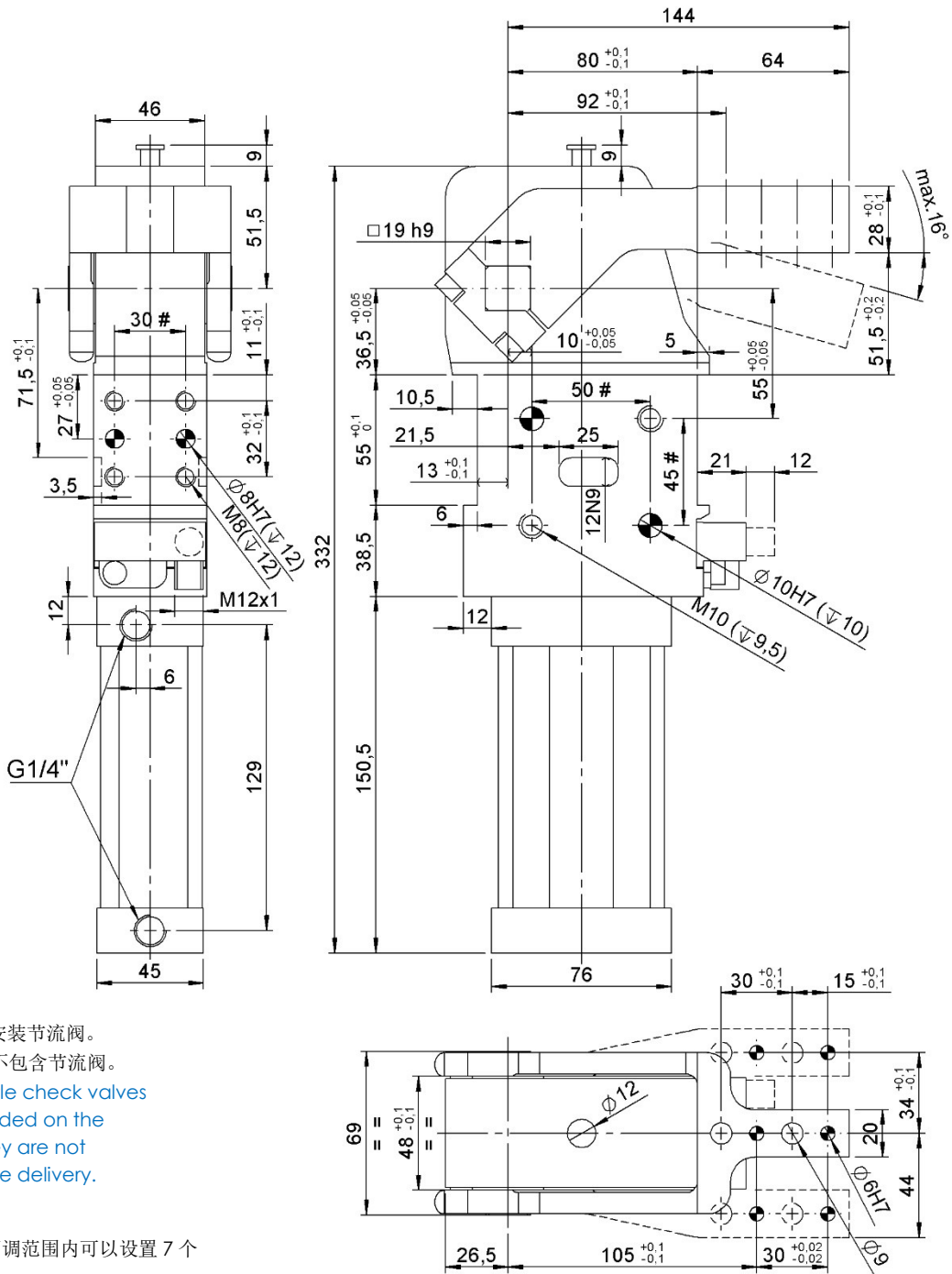
#Tolerances: dowel holes ±0.02, screw holes ±0.1

类型 Type	缸径 Cylinder bore	保持力 Holding moment	重量 Weight	工作气压 Working pressure	最大夹紧扭矩 Clamping max. torque (5 bar)	耗气量 Air consumption (5 bar)
	[mm]	[Nm]	[Kg]	[bar]	[Nm]	[l]
CPL50 H1...	50	1300	~ 4	4 - 8	250	2,6



CPL50 V1...S

夹紧气缸, D.50, 打开角度可调, 夹臂垂直对称安装, 夹臂高度 15mm
 Clamp, D.50, Vario Op. Angle, Vertical symmetric arm, Offset 15



气缸外部必须安装节流阀。
 VEP 供应气缸不包含节流阀。

External throttle check valves must be provided on the assembly. They are not included in the delivery.

标准打开角度:

在 2,5° ~ 16° 可调范围内可以设置 7 个角度位置。

Standard opening angles:

settable in 7 different positions in a range between 2,5° and 16°.

#公差: 定位销孔 ±0.02, 螺纹孔 ±0.1

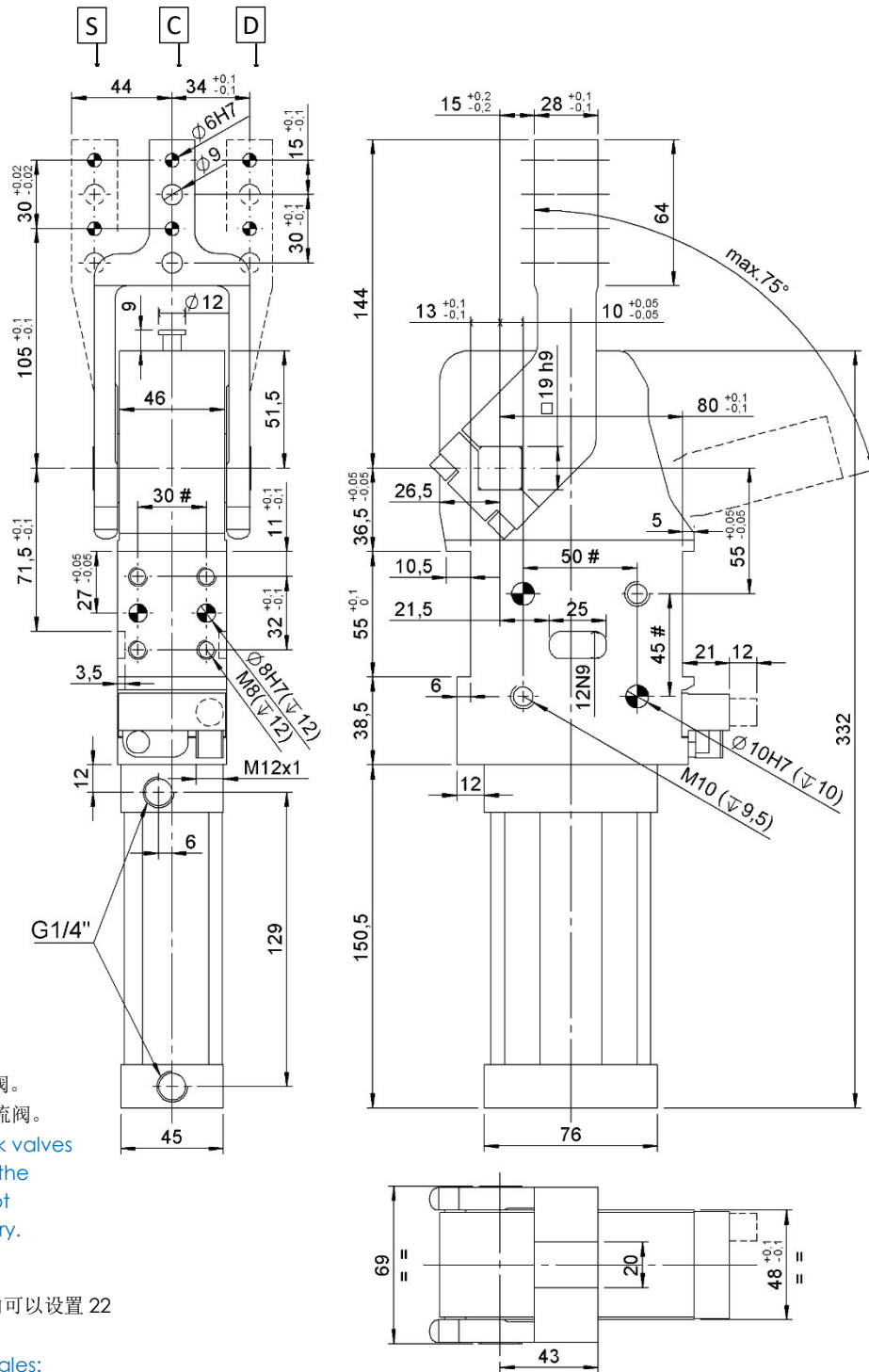
#Tolerances: dowel holes: ±0.02, screw holes: ±0.1

类型 Type	缸径 Cylinder bore	保持力 Holding moment	重量 Weight	工作压力 Working pressure	最大夹紧扭矩 Clamping max. torque (5 bar)	耗气量 Air consumption (5 bar)
	[mm]	[Nm]	[Kg]	[bar]	[Nm]	[l]
CPL50 V1...S	50	1300	~ 4	4 - 8	250	0,9



CPL50 H1...S

夹紧气缸, D.50, 打开角度可调, 夹臂水平对称安装, 夹臂高度 15mm
 Clamp, D.50, Vario Op. Angle, Horizontal symmetric arm, Offset 15



气缸外部必须安装节流阀。
 VEP 供应气缸不包含节流阀。
 External throttle check valves must be provided on the assembly. They are not included in the delivery.

标准打开角度：
 在 2.5° ~ 75° 可调范围内可以设置 22 个角度位置。
 Standard opening angles:
 settable in 22 different positions in a range between 2.5° and 75°.

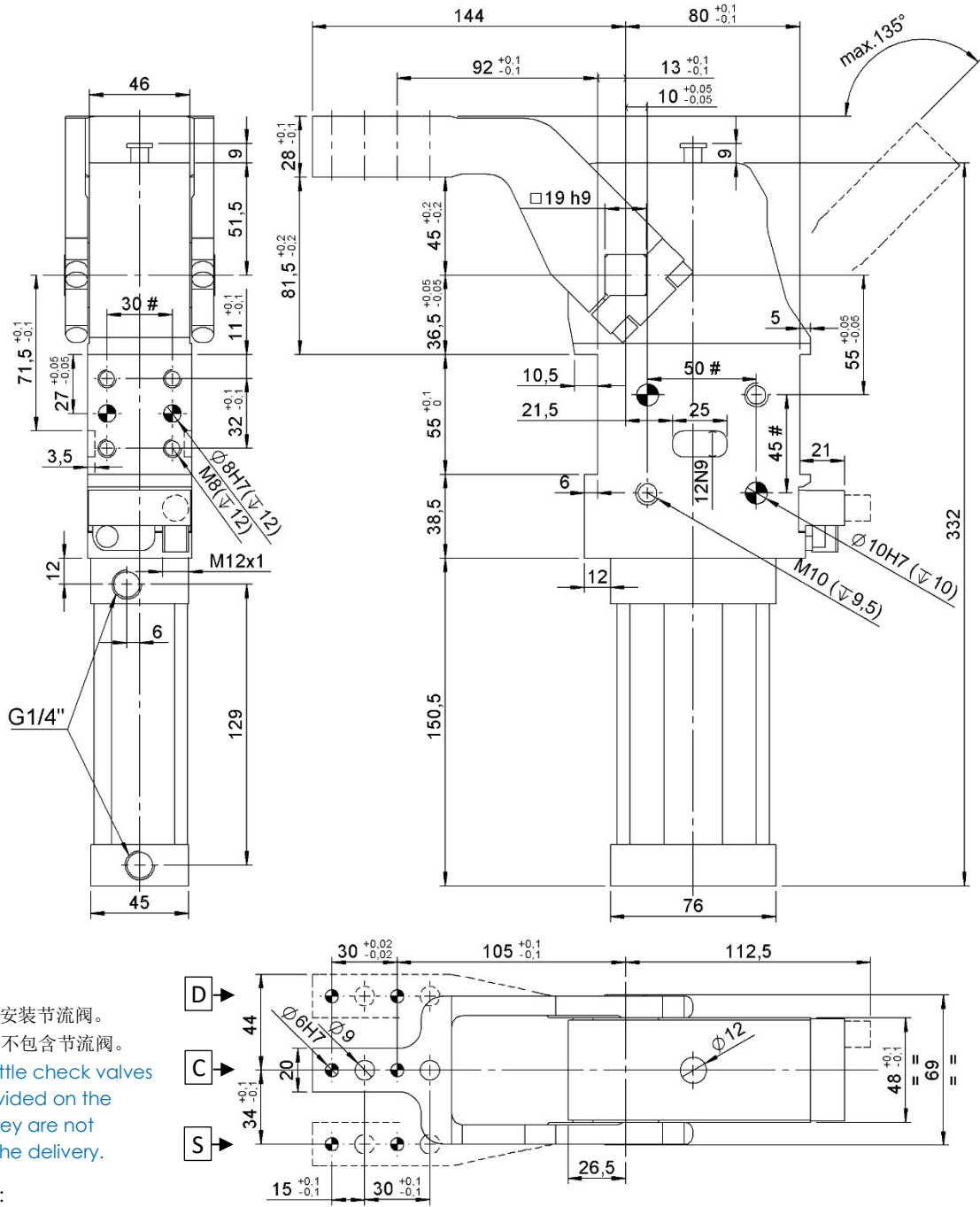
#公差: 定位销孔 ±0.02, 螺纹孔 ±0.1
 #Tolerances: dowel holes ±0.02, screw holes ±0.1

类型 Type	缸径 Cylinder bore	保持力 Holding moment	重量 Weight	工作气压 Working pressure	最大夹紧扭矩 Clamping max. torque (5 bar)	耗气量 Air consumption (5 bar)
	[mm]	[Nm]	[Kg]	[bar]	[Nm]	[l]
CPL50 H1...S	50	1300	~ 4	4 - 8	250	2,0



CPL50 V3...

夹紧气缸, D.50, 打开角度可调, 夹臂垂直安装, 夹臂高度 45mm
Clamp, D.50, Vario Op. Angle, Vertical arm, Offset 45



气缸外部必须安装节流阀。
VEP 供应气缸不包含节流阀。
External throttle check valves must be provided on the assembly. They are not included in the delivery.

标准打开角度：
在 2,5° ~ 135° 可调范围内可以设置 35 个角度位置。

Standard opening angles:
settable in 35 different positions in a range between 2,5° and 135°.

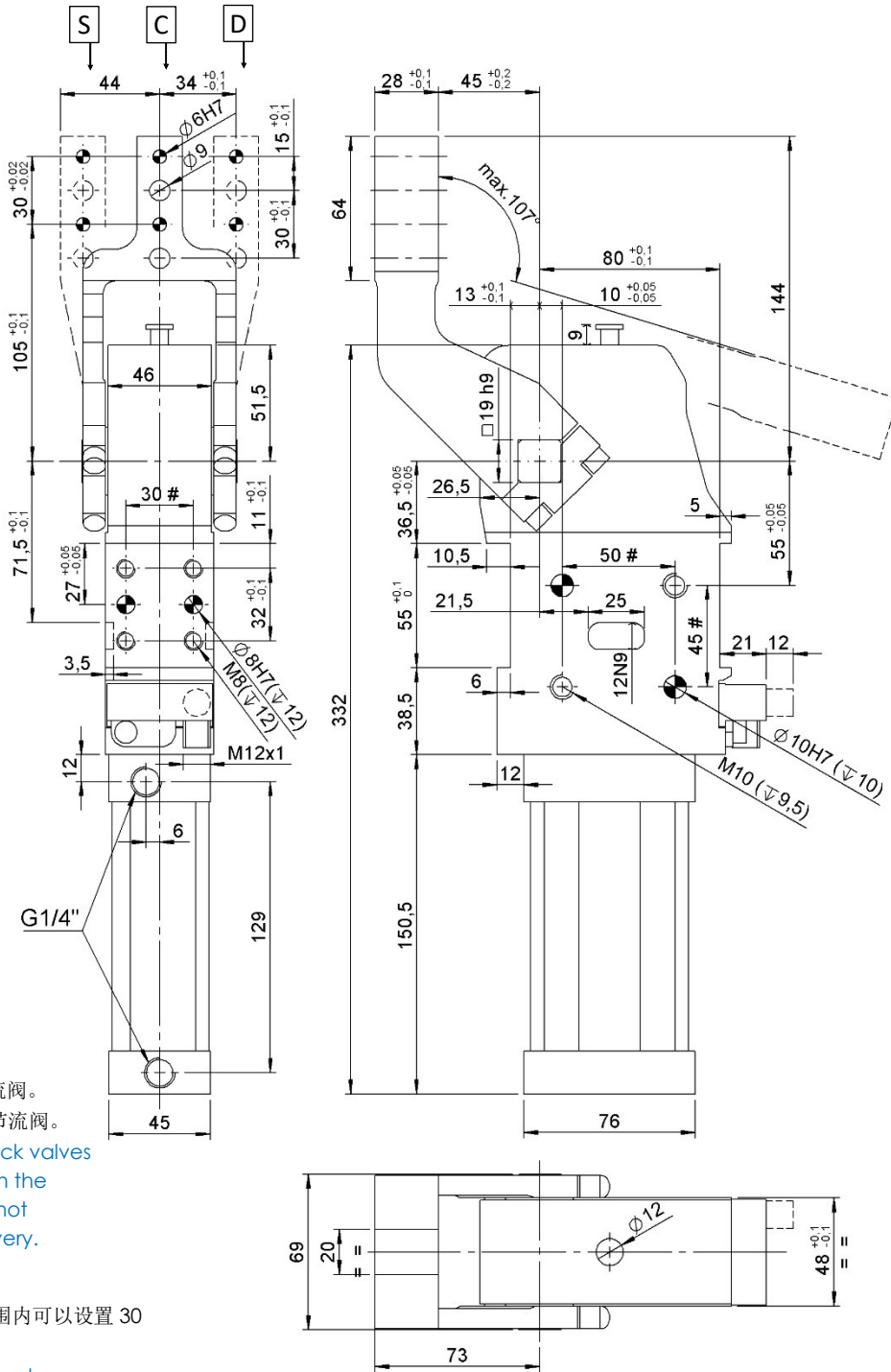
#公差: 定位销孔 ±0.02, 螺纹孔 ±0.1
Tolerances: dowel holes ±0.02, screw holes ±0.1

类型 Type	缸径 Cylinder bore	保持力 Holding moment	重量 Weight	工作气压 Working pressure	最大夹紧扭矩 Clamping max. torque (5 bar)	耗气量 Air consumption (5 bar)
	[mm]	[Nm]	[Kg]	[bar]	[Nm]	[l]
CPL50 V3...	50	1300	~ 4	4 - 8	250	3,0



CPL50 H3...

夹紧气缸, D.50, 打开角度可调, 夹臂水平安装, 夹臂高度 45mm
Clamp, D.50, Vario Op. Angle, Horizontal arm, Offset 45



气缸外部必须安装节流阀。
VEP 供应气缸不包含节流阀。
External throttle check valves must be provided on the assembly. They are not included in the delivery.

标准打开角度：
在 2,5° ~ 107° 可调范围内可以设置 30 个角度位置。

Standard opening angles:
settable in 30 different positions in a range between 2,5° and 107°.

#公差: 定位销孔 ±0.02, 螺纹孔 ±0.1

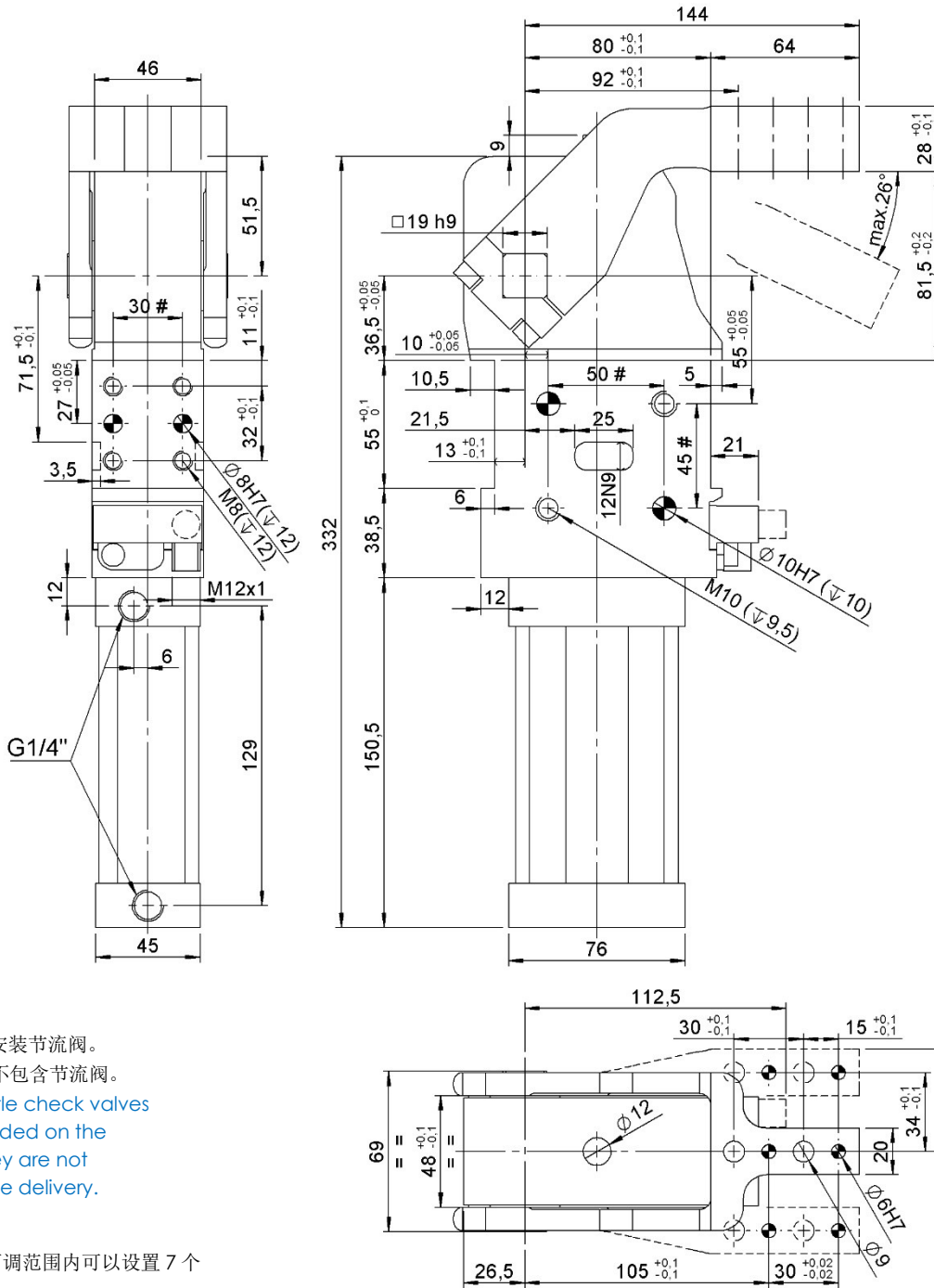
#Tolerances: dowel holes ±0.02, screw holes ±0.1

类型 Type	缸径 Cylinder bore	保持力 Holding moment	重量 Weight	工作气压 Working pressure	最大夹紧扭矩 Clamping max. torque (5 bar)	耗气量 Air consumption (5 bar)
	[mm]	[Nm]	[Kg]	[bar]	[Nm]	[l]
CPL50 H3...	50	1300	~ 4	4 - 8	250	2,6



CPL50 V3...S

夹紧气缸, D.50, 打开角度可调, 夹臂垂直对称安装, 夹臂高度 45mm
Clamp, D.50, Vario Op. Angle, Vertical symmetric arm, Offset 45



气缸外部必须安装节流阀。
VEP 供应气缸不包含节流阀。
External throttle check valves must be provided on the assembly. They are not included in the delivery.

标准打开角度：
在 2,5° ~ 26° 可调范围内可以设置 7 个角度位置。

Standard opening angles:
settable in 7 different positions in a range between 2,5° and 26°.

#公差: 定位销孔 ±0.02, 螺纹孔 ±0.1

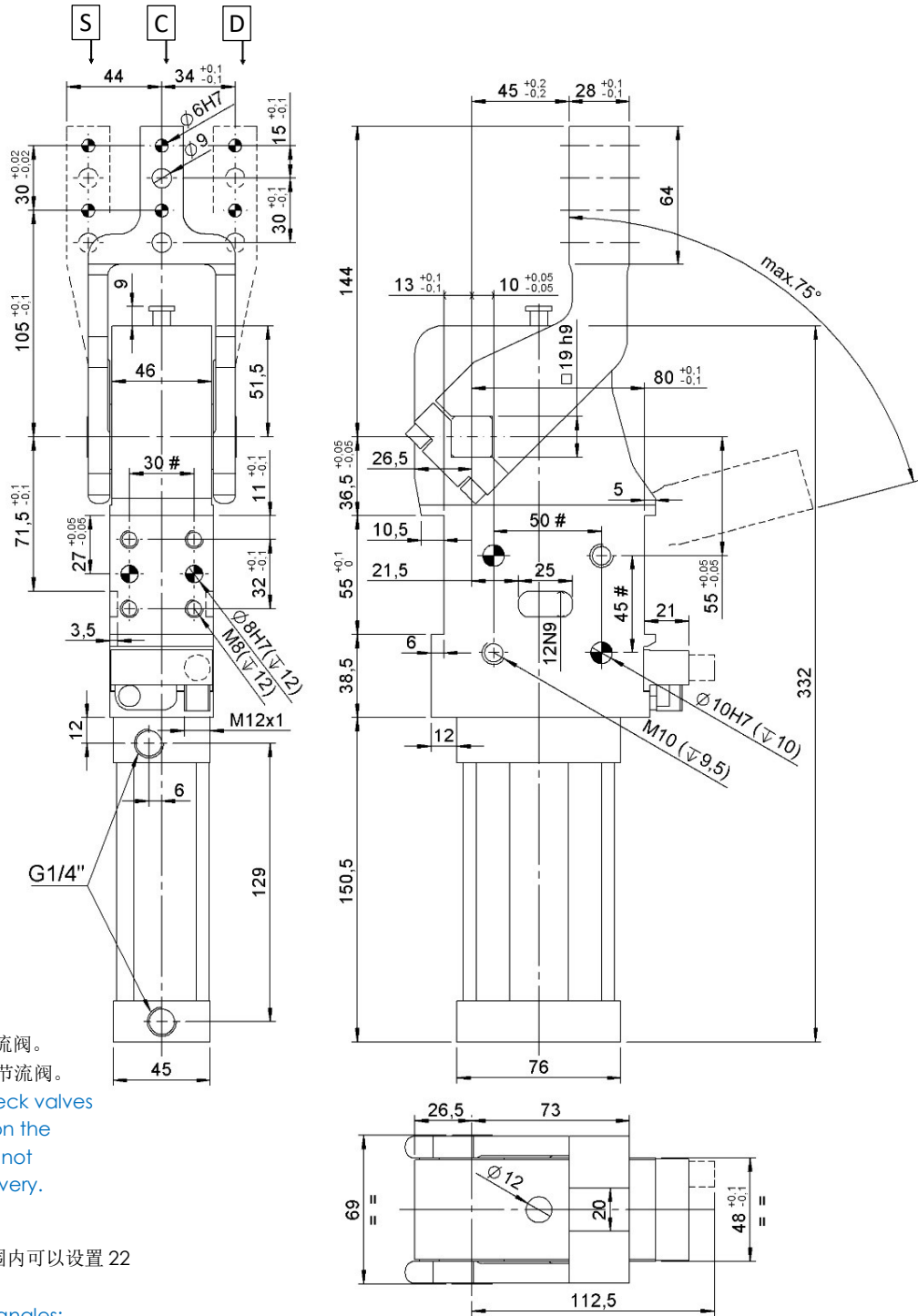
#Tolerances: dowel holes: ±0.02 | screw holes: ±0.1

类型 Type	缸径 Cylinder bore	保持力 Holding moment	重量 Weight	工作气压 Working pressure	最大夹紧扭矩 Clamping max. torque (5 bar)	耗气量 Air consumption (5 bar)
	[mm]	[Nm]	[Kg]	[bar]	[Nm]	[l]
CPL50 V3...S	50	1300	~ 4	4 - 8	250	1,0



CPL50 H3...S

夹紧气缸, D.50, 打开角度可调, 夹臂水平对称安装, 夹臂高度 45mm
 Clamp, D.50, Vario Op. Angle, Horizontal symmetric arm, Offset 45



气缸外部必须安装节流阀。
 VEP 供应气缸不包含节流阀。

External throttle check valves must be provided on the assembly. They are not included in the delivery.

标准打开角度:

在 2,5° ~ 75° 可调范围内可以设置 22 个角度位置。

Standard opening angles:

settable in 22 different positions in a range between 2,5° and 75°.

#公差: 定位销孔 ±0.02, 螺纹孔 ±0.1

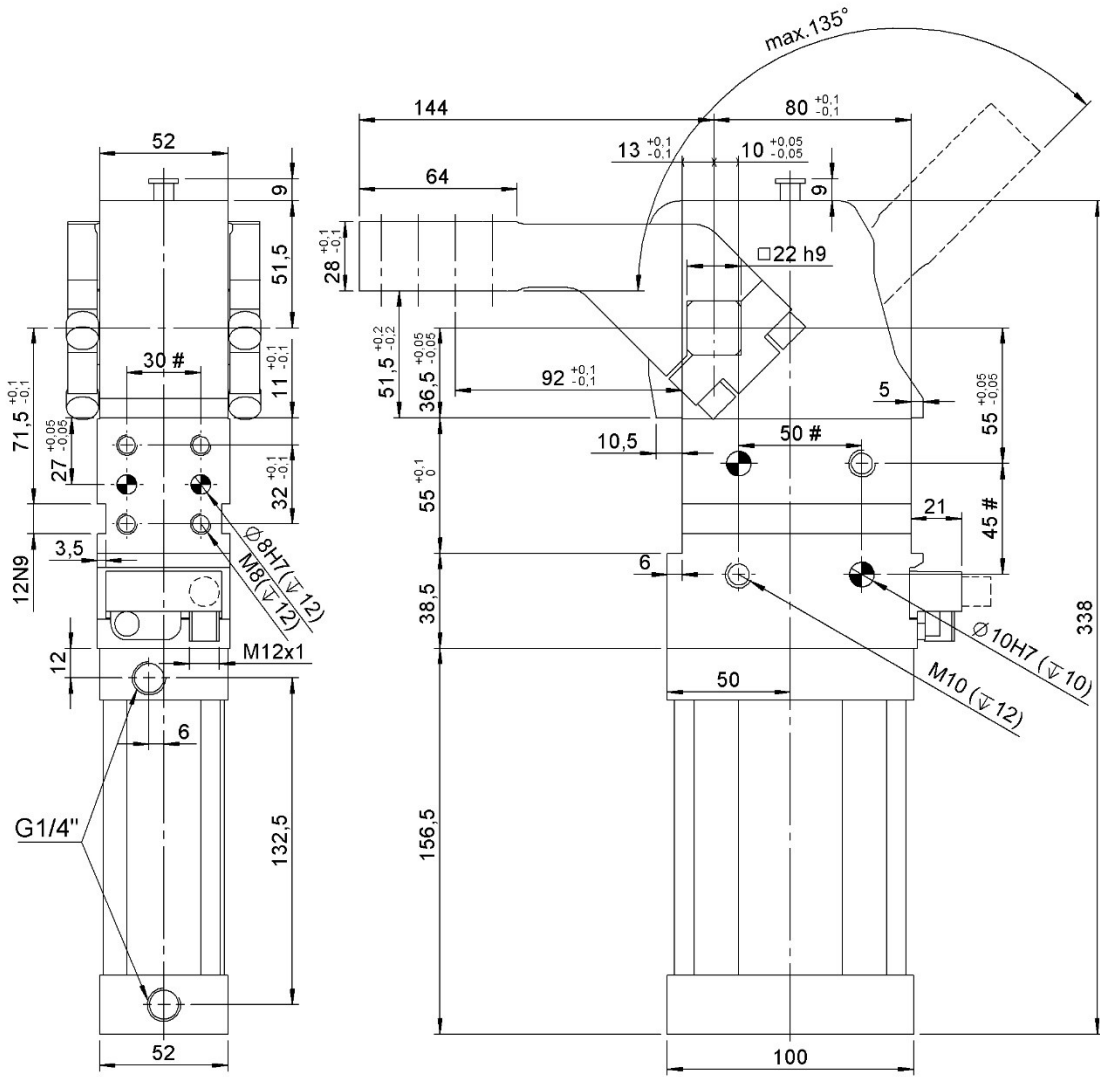
#Tolerances: dowel holes ±0.02, screw holes ±0.1

类型 Type	缸径 Cylinder bore	保持力 Holding moment	重量 Weight	工作气压 Working pressure	最大夹紧扭矩 Clamping max. torque (5 bar)	耗气量 Air consumption (5 bar)
	[mm]	[Nm]	[Kg]	[bar]	[Nm]	[l]
CPL50 H3...S	50	1300	~ 4	4 - 8	250	2,0



CPL63 V1...

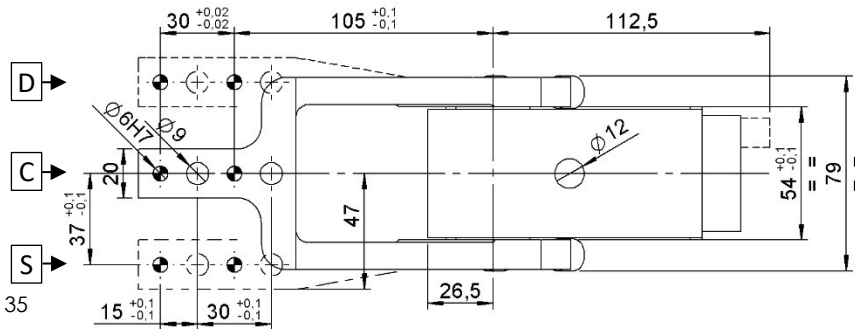
夹紧气缸, D.63, 打开角度可调, 夹臂垂直安装, 夹臂高度 15mm
 Clamp, D.63, Vario Op. Angle, Vertical arm, Offset 15



气缸外部必须安装节流阀。
 VEP 供应气缸不包含节流阀。
 External throttle check valves must be provided on the assembly. They are not included in the delivery.

标准打开角度：
 在 2,5° ~ 135° 可调范围内可以设置 35 个角度位置。

Standard opening angles:
 settable in 35 different positions in a range between 2,5° and 135°.



#公差: 定位销孔 ±0.02, 螺纹孔 ±0.1

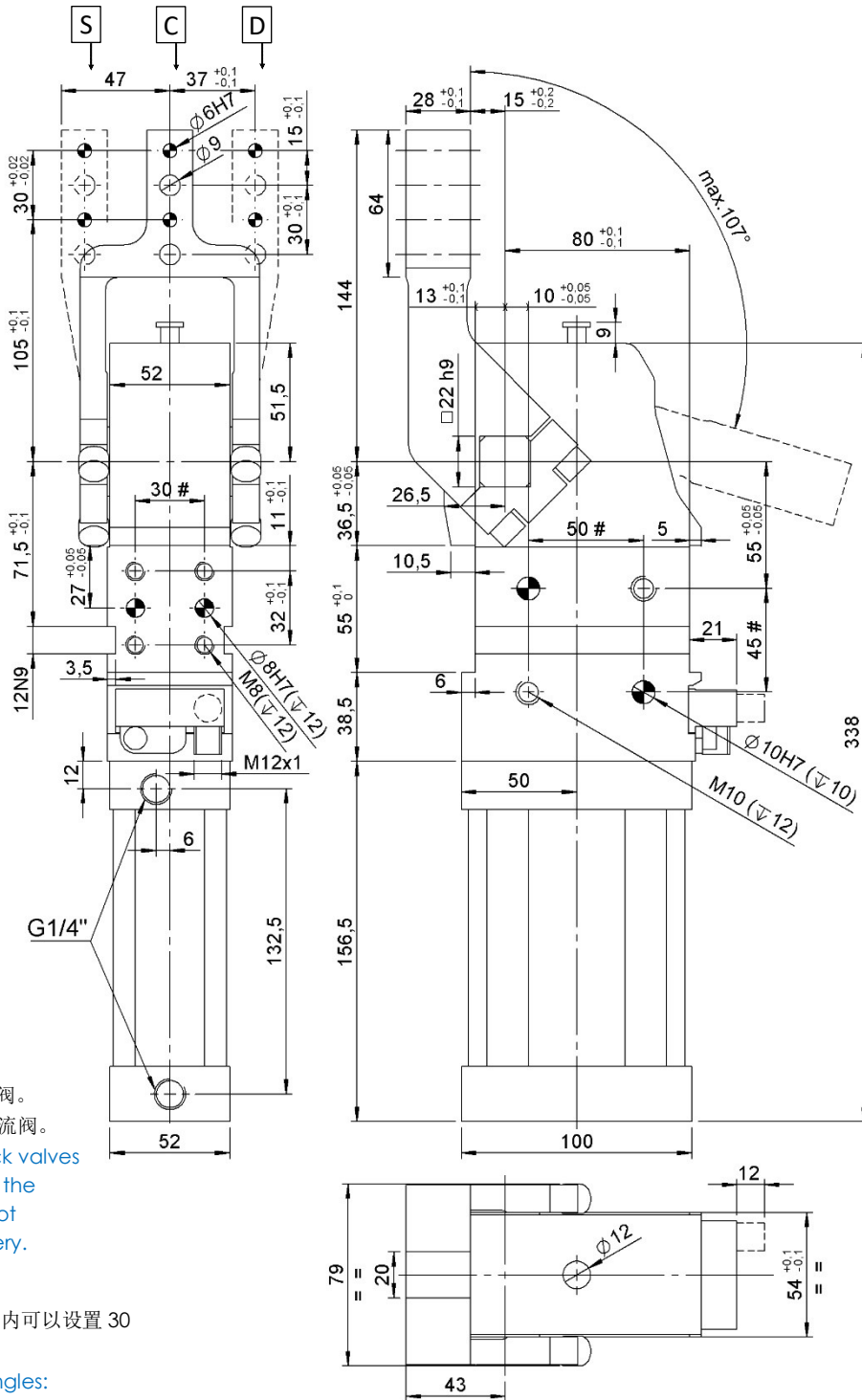
#Tolerances: dowel holes ±0.02, screw holes ±0.1

类型 Type	缸径 Cylinder bore	保持力 Holding moment	重量 Weight	工作压力 Working pressure	最大夹紧扭矩 Clamping max. torque (5 bar)	耗气量 Air consumption (5 bar)
	[mm]	[Nm]	[Kg]	[bar]	[Nm]	[l]
CPL63 V1...	63	1700	~ 5	4 - 8	420	3,8



CPL63 H1...

夹紧气缸, D.63, 打开角度可调, 夹臂水平安装, 夹臂高度 15mm
 Clamp, D.63, Vario Op. Angle, Horizontal arm, Offset 15



气缸外部必须安装节流阀。
 VEP 供应气缸不包含节流阀。
 External throttle check valves must be provided on the assembly. They are not included in the delivery.

标准打开角度：
 在 2,5° ~ 107° 可调范围内可以设置 30 个角度位置。

Standard opening angles:
 settable in 30 different positions in a range between 2,5° and 107°.

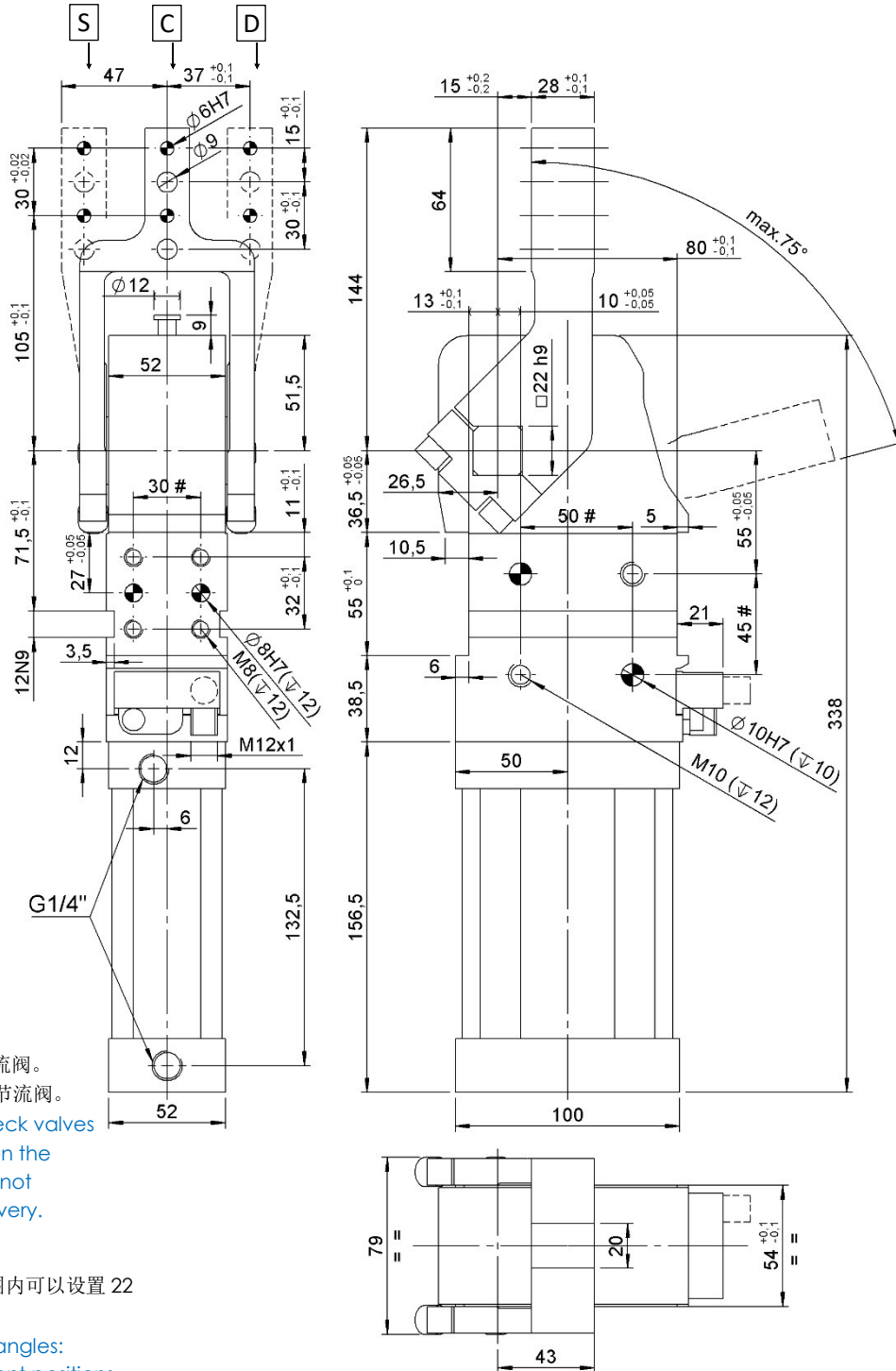
#公差: 定位销孔 ±0.02, 螺纹孔 ±0.1
 #Tolerances: dowel holes ±0.02, screw holes ±0.1

类型 Type	缸径 Cylinder bore	保持力 Holding moment	重量 Weight	工作气压 Working pressure	最大夹紧扭矩 Clamping max. torque (5 bar)	耗气量 Air consumption (5 bar)
	[mm]	[Nm]	[Kg]	[bar]	[Nm]	[l]
CPL63 H1...	63	1700	~ 5	4 - 8	420	3,2



CPL63 H1...S

夹紧气缸, D.63, 打开角度可调, 夹紧水平对称安装, 夹臂高度 15mm
 Clamp, D.63, Vario Op. Angle, Horizontal symmetric arm, Offset 15



气缸外部必须安装节流阀。
 VEP 供应气缸不包含节流阀。

External throttle check valves must be provided on the assembly. They are not included in the delivery.

标准打开角度:

在 2.5° ~ 75° 可调范围内可以设置 22 个角度位置。

Standard opening angles:

settable in 22 different positions in a range between 2.5° and 75°.

#公差: 定位销孔 ±0.02, 螺纹孔 ±0.1

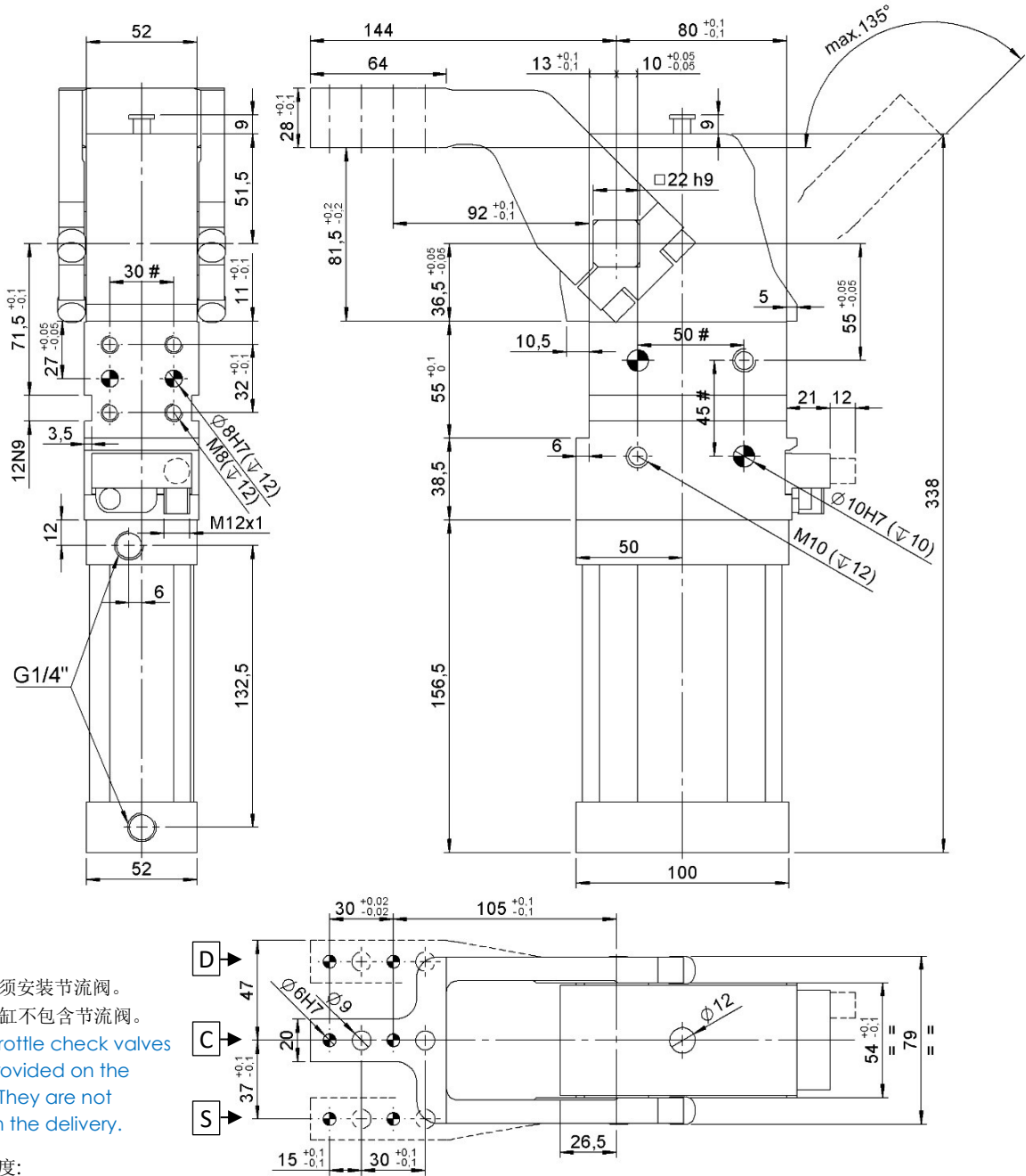
#Tolerances: dowel holes ±0.02, screw holes ±0.1

类型 Type	缸径 Cylinder bore	保持力 Holding moment	重量 Weight	工作压力 Working pressure	最大夹紧扭矩 Clamping max. torque (5 bar)	耗气量 Air consumption (5 bar)
	[mm]	[Nm]	[Kg]	[bar]	[Nm]	[l]
CPL63-H1...S	63	1700	~ 5	4 - 8	420	2,5



CPL63 V3...

夹紧气缸, D.63, 打开角度可调, 夹臂垂直安装, 夹臂高度 45mm
 Clamp, D.63, Vario Op. Angle, Vertical arm, Offset 45



气缸外部必须安装节流阀。
 VEP 供应气缸不包含节流阀。
 External throttle check valves must be provided on the assembly. They are not included in the delivery.

标准打开角度：
 在 2,5° ~ 135° 可调范围内可以设置 35 个角度位置。

Standard opening angles:
 settable in 35 different positions in a range between 2,5° and 135°.

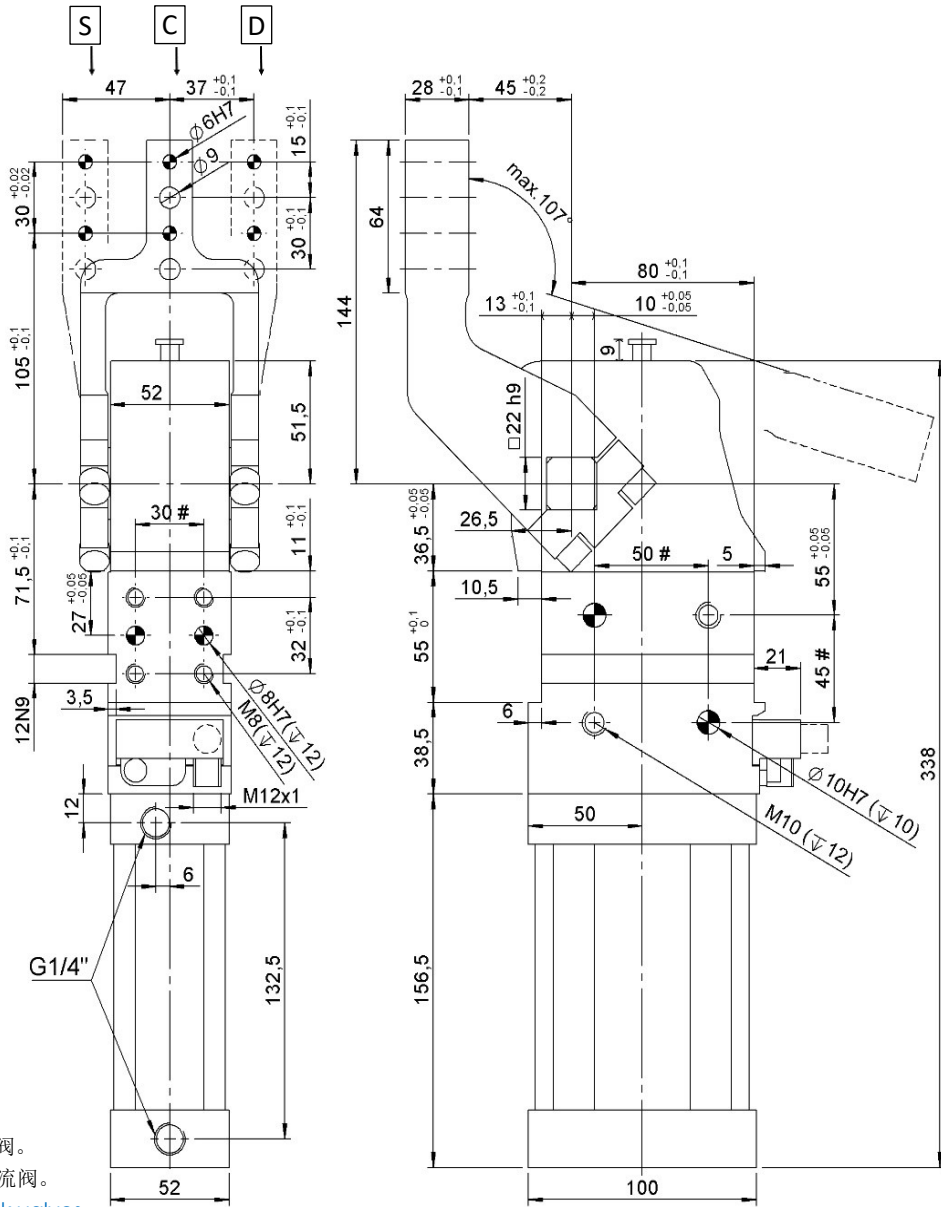
#公差: 定位销孔 ±0.02, 螺纹孔 ±0.1
 #Tolerances: dowel holes ±0.02, screw holes ±0.1

类型 Type	缸径 Cylinder bore	保持力 Holding moment	重量 Weight	工作气压 Working pressure	最大夹紧扭矩 Clamping max. torque (5 bar)	耗气量 Air consumption (5 bar)
	[mm]	[Nm]	[Kg]	[bar]	[Nm]	[l]
CPL63 V3...	63	1700	~ 5	4 - 8	420	3,8



CPL63 H3...

夹紧气缸, D.63, 打开角度可调, 夹臂水平安装, 夹臂高度 45mm
Clamp, D.63, Vario Op. Angle, Horizontal arm, Offset 45



气缸外部必须安装节流阀。
VEP 供应气缸不包含节流阀。
External throttle check valves must be provided on the assembly. They are not included in the delivery.

标准打开角度：
在 2,5° ~ 107° 可调范围内可以设置 30 个角度位置。

Standard opening angles:
settable in 30 different positions in a range between 2,5° and 107°.

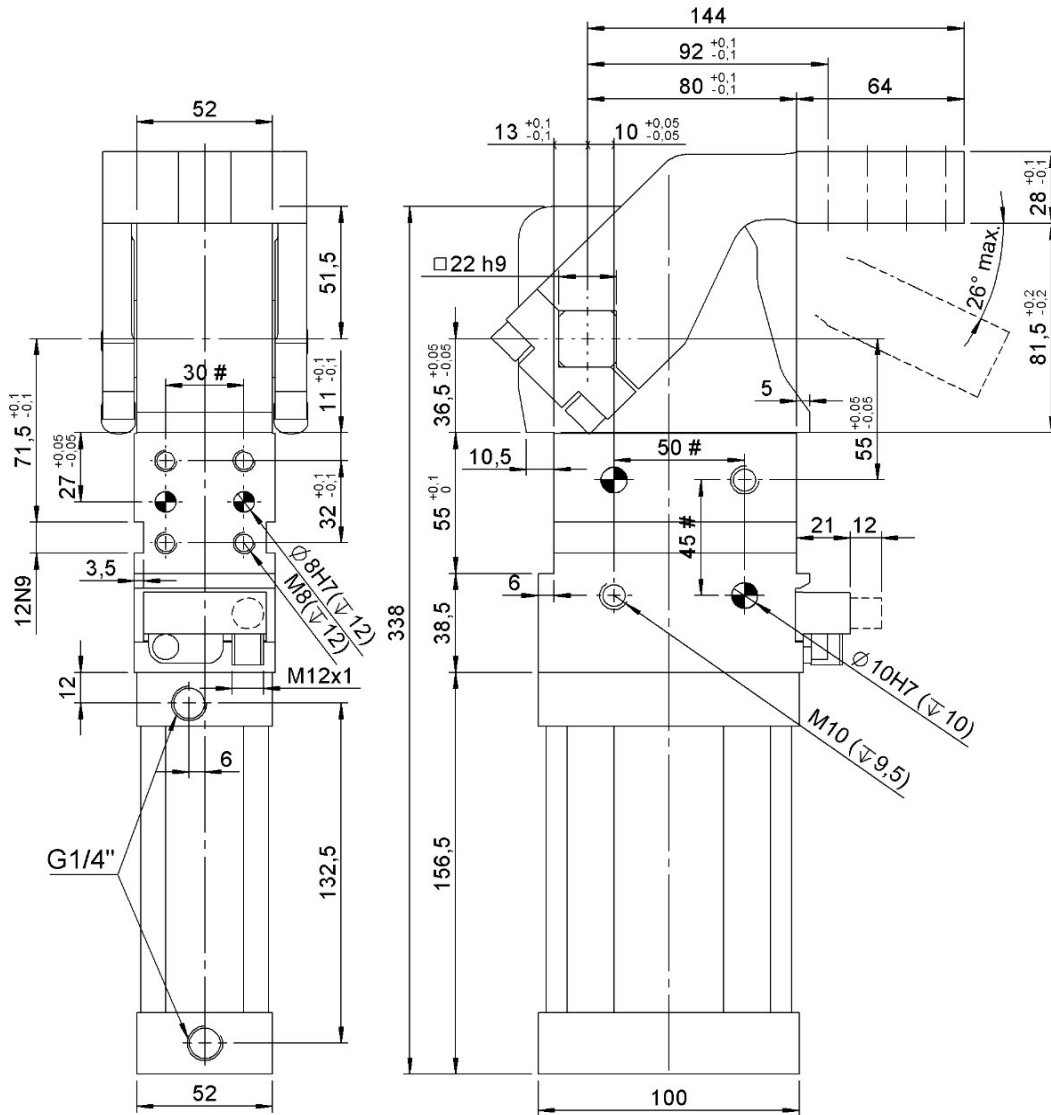
#公差: 定位销孔 ±0.02, 螺纹孔 ±0.1
#Tolerances: dowel holes ±0.02, screw holes ±0.1

类型 Type	缸径 Cylinder bore	保持力 Holding moment	重量 Weight	工作气压 Working pressure	最大夹紧扭矩 Clamping max. torque (5 bar)	耗气量 Air consumption (5 bar)
	[mm]	[Nm]	[Kg]	[bar]	[Nm]	[l]
CPL63 H3...	63	1700	~ 5	4 - 8	420	3,2



CPL63 V3...S

夹紧气缸, D.63, 打开角度可调, 夹臂水平对称安装, 夹臂高度 45mm
 Clamp, D.63, Vario Op. Angle, Vertical symmetric arm, Offset 45



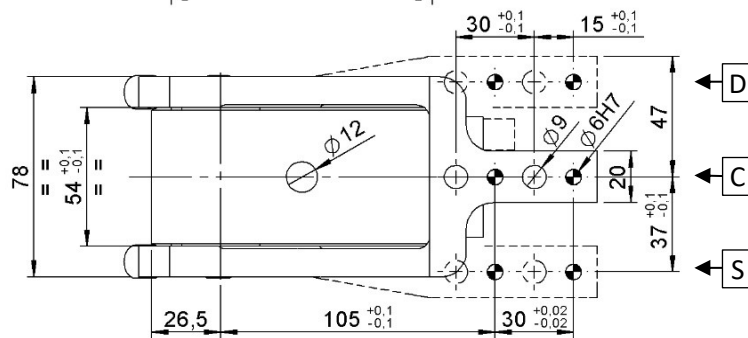
气缸外部必须安装节流阀。
 VEP 供应气缸不包含节流阀。
 External throttle check valves must be provided on the assembly. They are not included in the delivery.

标准打开角度：
 在 2,5° ~ 26° 可调范围内可以设置 7 个角度位置。

Standard opening angles:
 settable in 7 different positions in a range between 2,5° and 26°.

#公差: 定位销孔 ±0.02, 螺纹孔 ±0.1

#Tolerances: dowel holes ±0.02, screw holes ±0.1

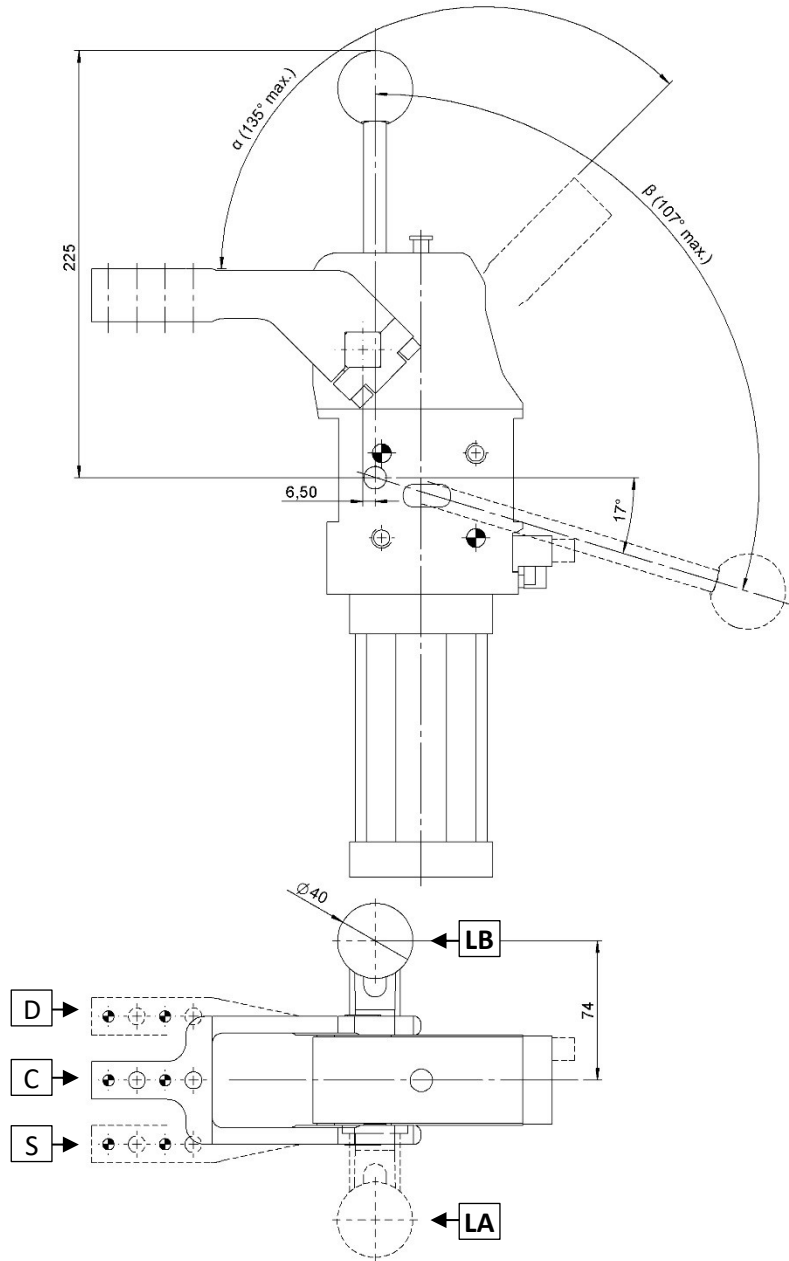


类型 Type	缸径 Cylinder bore	保持力 Holding moment	重量 Weight	工作气压 Working pressure	最大夹紧扭矩 Clamping max. torque (5 bar)	耗气量 Air consumption (5 bar)
	[mm]	[Nm]	[Kg]	[bar]	[Nm]	[l]
CPL63 V3...S	63	1700	~ 5	4 - 8	420	1,3



CPLM50L...V1... / CPLM63L...V1...

夹紧气缸, D. 50/63, 打开角度可调, 带手动机构, 夹臂垂直安装, 夹臂高度 15mm
 Clamp, D.50/63, Vario Op. Angle, Hand Lever, Vert. arm, Offset 15



α	16°	30°	46°	58°	75°	91°	107°	122°	135°
β	37°	47°	57°	63°	73°	82°	92°	101°	107°

手柄角度控制按 20°一格调整

Manual control adjustable in steps of 20°

#公差: 定位销孔 ±0.02, 螺纹孔 ±0.1

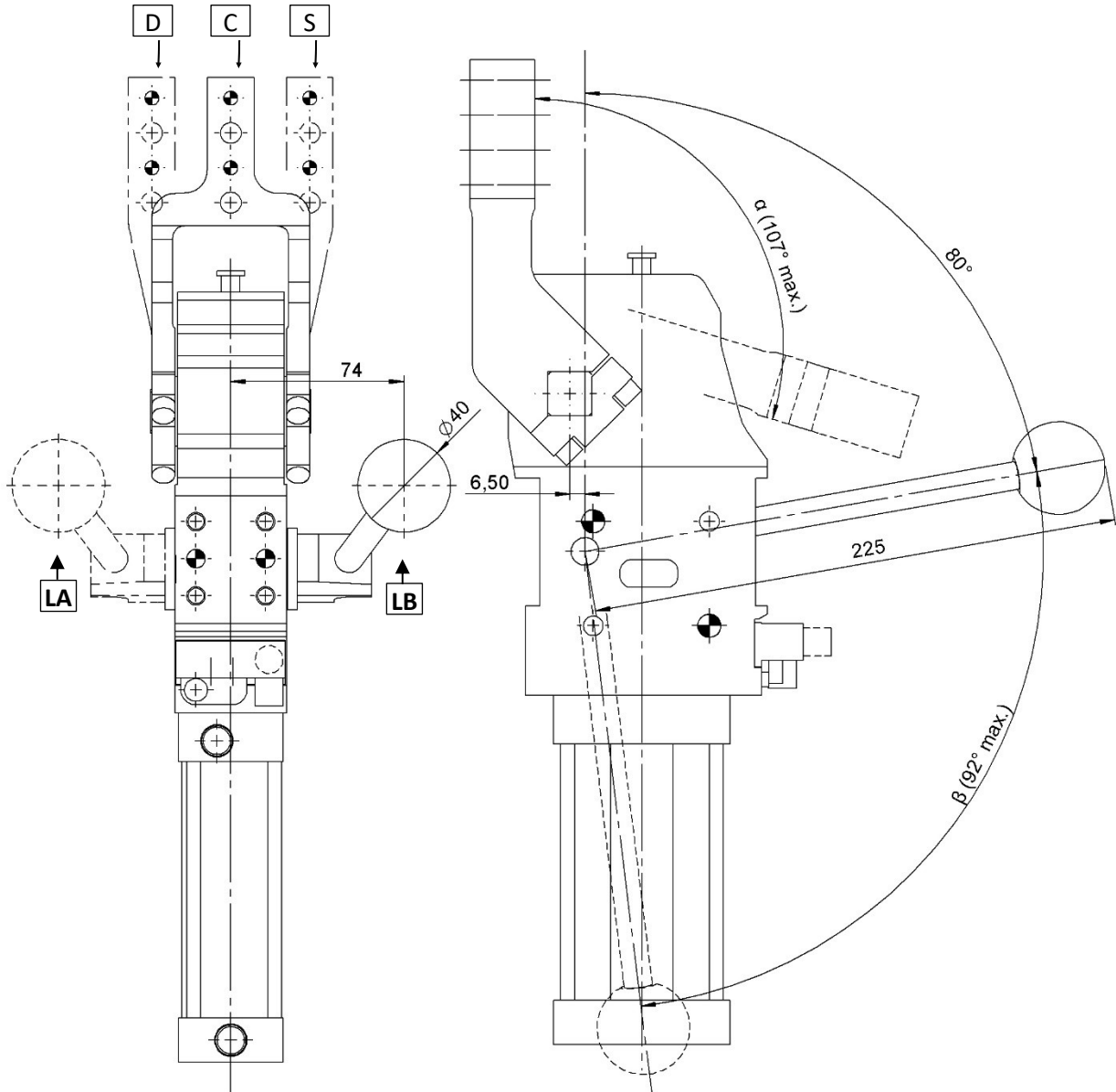
#Tolerances: dowel holes ±0.02, screw holes ±0.1

类型 Type	缸径 Cylinder bore	保持力 Holding moment	重量 Weight	工作气压 Working pressure	最大手动推力 Max. manual force
	[mm]	[Nm]	[Kg]	[bar]	[N]
CPLM50L...V1...	50	1300	~ 4,5	4 – 8	200
CPLM63L...V1...	63	1700	~ 5,5		



CPLM50L...H1... / CPLM63L...H1...

夹紧气缸, D. 50/63, 打开角度可调, 带手动机构, 夹臂水平安装, 夹臂高度 15mm
Clamp, D.50/63, Vario Op. Angle, Hand Lever, Horiz. Arm, Offset 15



α	16°	30°	46°	58°	75°	91°	107°
β	37°	47°	57°	63°	73°	82°	92°

手柄角度控制按 20°一格调整

Manual control adjustable in steps of 20°

#公差: 定位销孔 ± 0.02 , 螺纹孔 ± 0.1

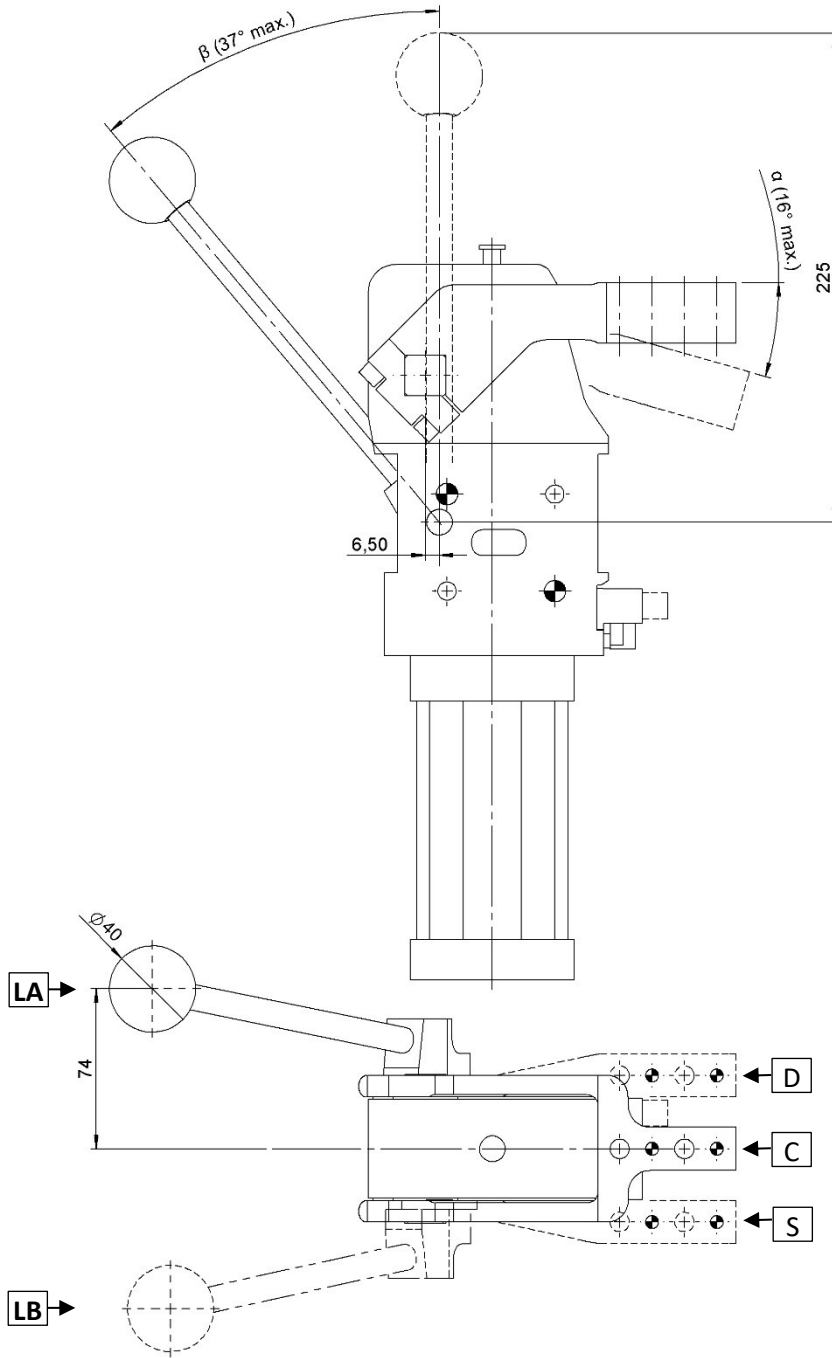
#Tolerances: dowel holes ± 0.02 , screw holes ± 0.1

类型 Type	缸径 Cylinder bore	保持力 Holding moment	重量 Weight	工作气压 Working pressure	最大手动推力 Max. manual force
	[mm]	[Nm]	[Kg]	[bar]	[N]
CPLM50L...H1...	50	1300	~ 4,5	4 - 8	200
CPLM63L...H1...	63	1700	~ 5,5		



CPLM50L...V1...S / CPLN63L...V1...S

夹紧气缸, D. 50/63, 打开角度可调, 带手动机构, 夹臂垂直对称安装, 夹臂高度 15mm
 Clamp, D.50/63, Vario Op. Angle, Hand Lever, Vert. Sym., Offset 15



α	16°
β	37°

#公差: 定位销孔 ± 0.02 , 螺纹孔 ± 0.1
 #Tolerances: dowel holes ± 0.02 , screw holes ± 0.1

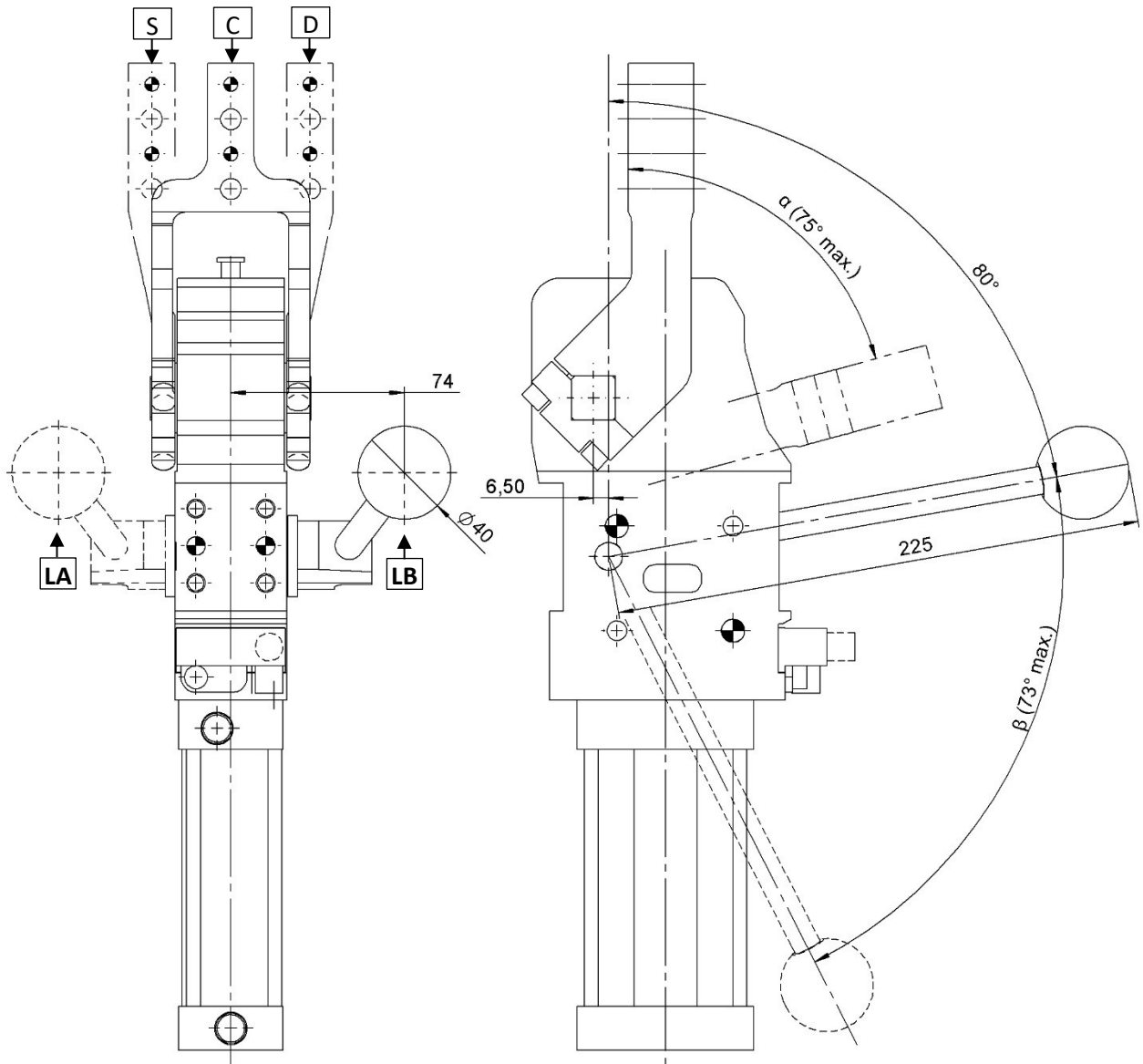
类型 Type	缸径 Cylinder bore	保持力 Holding moment	重量 Weight	工作气压 Working pressure	最大手动推力 Max. manual force
	[mm]	[Nm]	[Kg]	[bar]	[N]
CPLM50L...V1...S	50	1300	~ 4,5	4 - 8	200
CPLM63L...V1...S	63	1700	~ 5,5		



CPLM50L...H1...S / CPLM63L...H1...S

夹紧气缸, D. 50/63, 打开角度可调, 带手动机构, 夹臂水平安装, 夹臂高度 15mm

Clamp, D.50/63, Vario Op. Angle, Hand Lever, Horiz. Sym., Offset 15



α	16°	30°	46°	58°	75°
β	37°	47°	57°	63°	73°

手柄角度控制按 20°一格调整

Manual control adjustable in steps of 20°

#公差: 定位销孔 ± 0.02 , 螺纹孔 ± 0.1

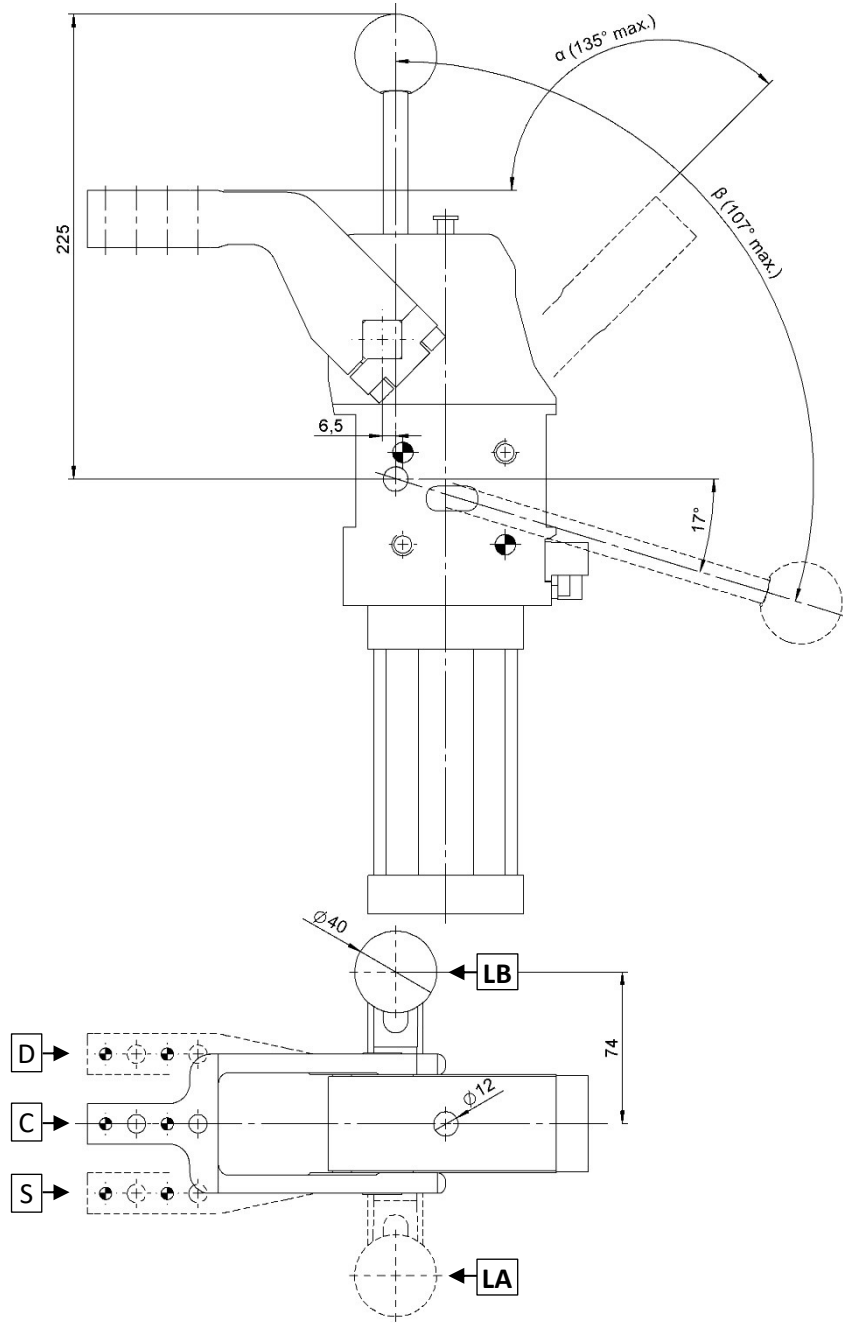
#Tolerances: dowel holes ± 0.02 , screw holes ± 0.1

类型 Type	缸径 Cylinder bore	保持力 Holding moment	重量 Weight	工作气压 Working pressure	最大手动推力 Max. manual force
	[mm]	[Nm]	[Kg]	[bar]	[N]
CPLM50L...H1...S	50	1300	~ 4,5	4 – 8	200
CPLM63L...H1...S	63	1700	~ 5,5		



CPLM50L...V3... / CPLM63L...V3...

夹紧气缸, D. 50/63, 打开角度可调, 带手机构, 夹臂垂直安装, 夹臂高度 45mm
Clamp, D.50/63, Vario Op. Angle, Hand Lever, Vert. arm, Offset 45



α	16°	30°	46°	58°	75°	91°	107°	122°	135°
β	37°	47°	57°	63°	73°	82°	92°	101°	107°

手柄角度控制按 20°一格调整

Manual control adjustable in steps of 20°

#公差: 定位销孔 ±0.02, 螺纹孔 ±0.1

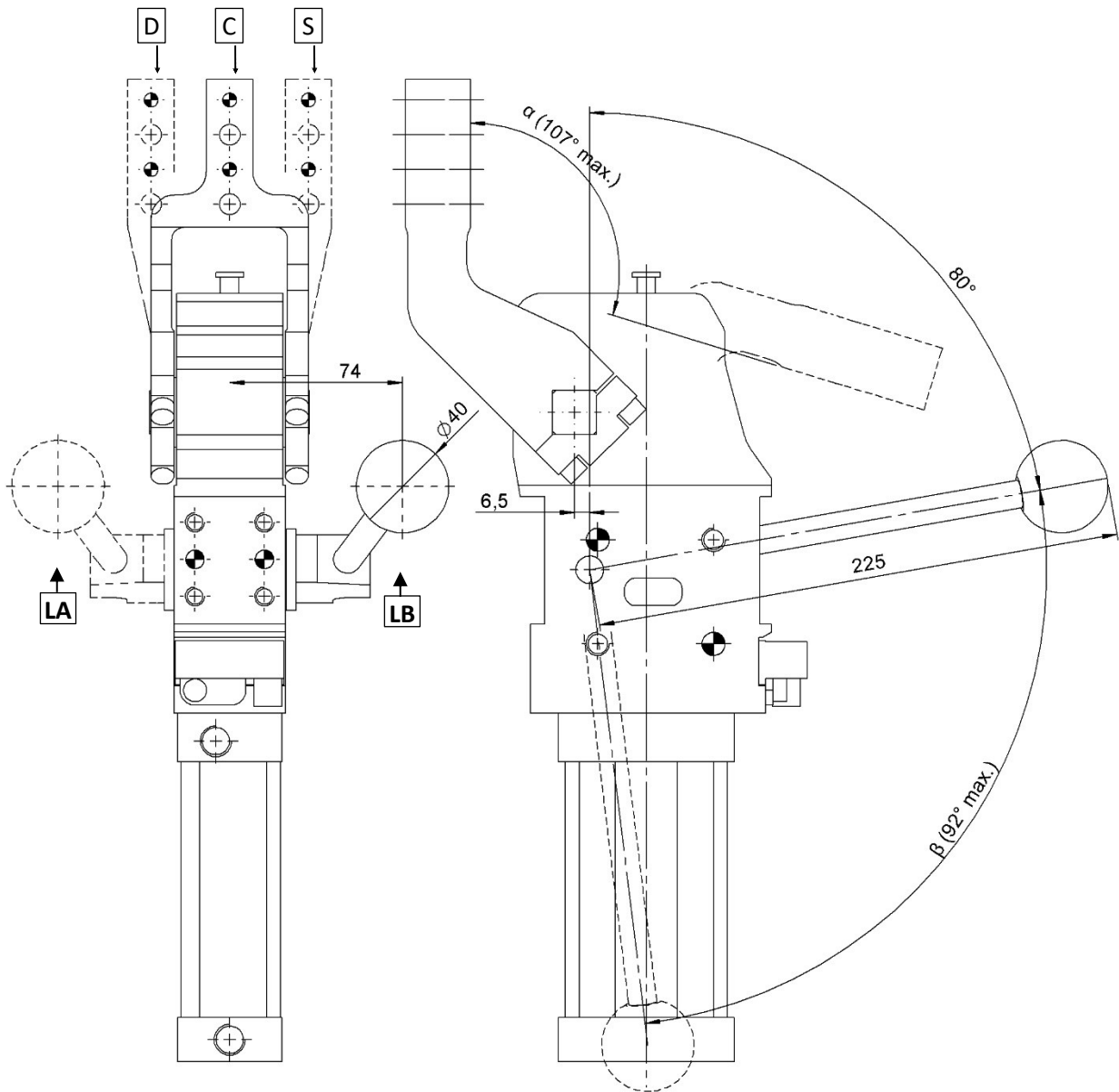
#Tolerances: dowel holes ±0.02, screw holes ±0.1

类型 Type	缸径 Cylinder bore	保持力 Holding moment	重量 Weight	工作气压 Working pressure	最大手动推力 Max. manual force
	[mm]	[Nm]	[Kg]	[bar]	[N]
CPLM50L...V3...	50	1300	~ 4,5	4 - 8	200
CPLM63L...V3...	63	1700	~ 5,5		



CPLM50L...H3... / CPLM63L...H3...

夹紧气缸, D. 50/63, 打开角度可调, 带手动机构, 夹臂水平安装, 夹臂高度 45mm
Clamp, D.50/63, Vario Op. Angle, Hand Lever, Horiz. Arm, Offset 45



α	16°	30°	46°	58°	75°	91°	107°
β	37°	47°	57°	63°	73°	82°	92°

手柄角度控制按 20°一格调整

Manual control adjustable in steps of 20°

#公差: 定位销孔 ± 0.02 , 螺纹孔 ± 0.1

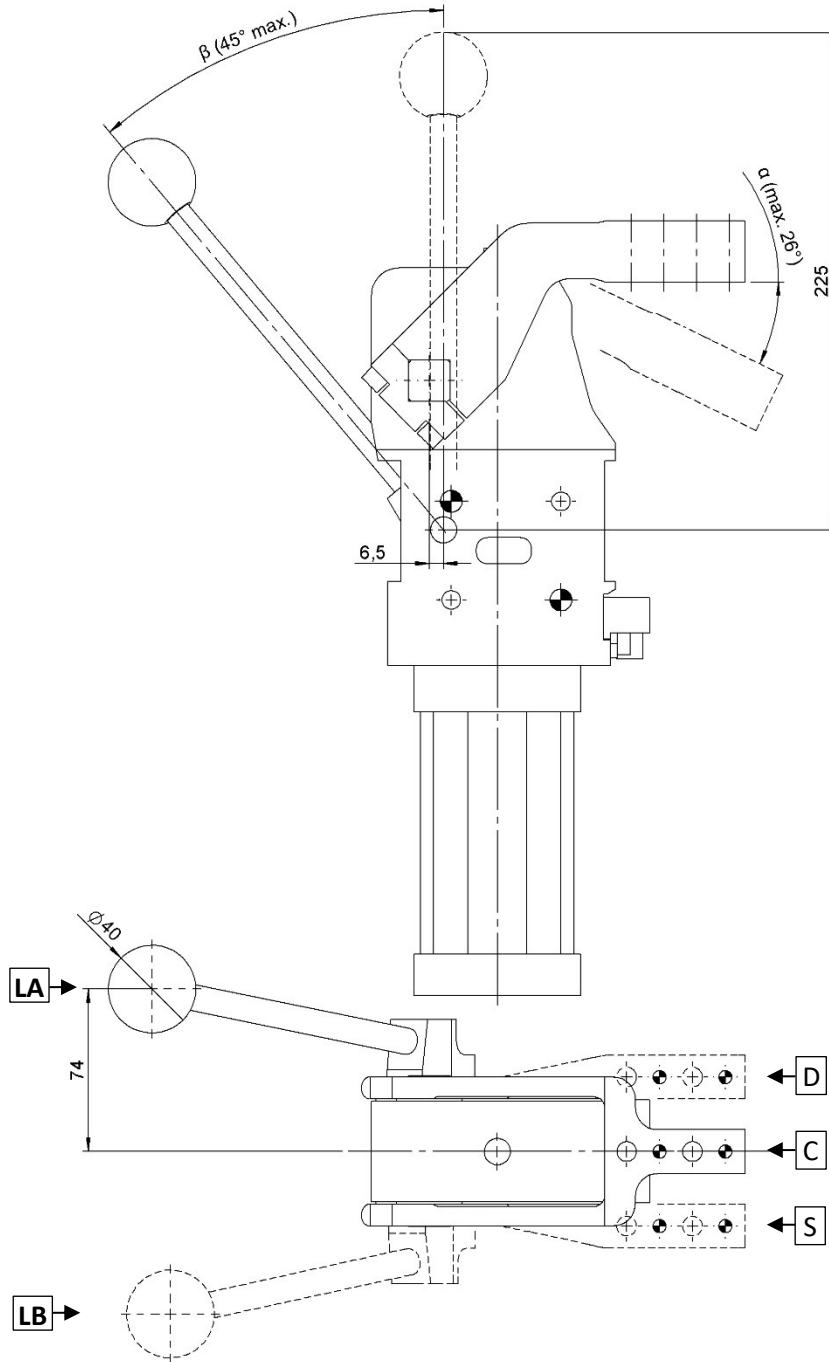
#Tolerances: dowel holes ± 0.02 , screw holes ± 0.1

类型 Type	缸径 Cylinder bore	保持力 Holding moment	重量 Weight	工作气压 Working pressure	最大手动推力 Max. manual force
	[mm]	[Nm]	[Kg]	[bar]	[N]
CPLM50L...H3...	50	1300	~ 4,5	4 - 8	200
CPLM63L...H3...	63	1700	~ 5,5		



CPLM50L...V3...S / CPLN63L...V3...S

夹紧气缸, D. 50/63, 打开角度可调, 带手动机构, 夹臂垂直安装, 夹臂高度 45mm
Clamp, D.50/63, Vario Op. Angle, Hand Lever, Vert. Sym., Offset 45



α	26°
β	45°

#公差: 定位销孔 ± 0.02 , 螺纹孔 ± 0.1

#Tolerances: dowel holes ± 0.02 , screw holes ± 0.1

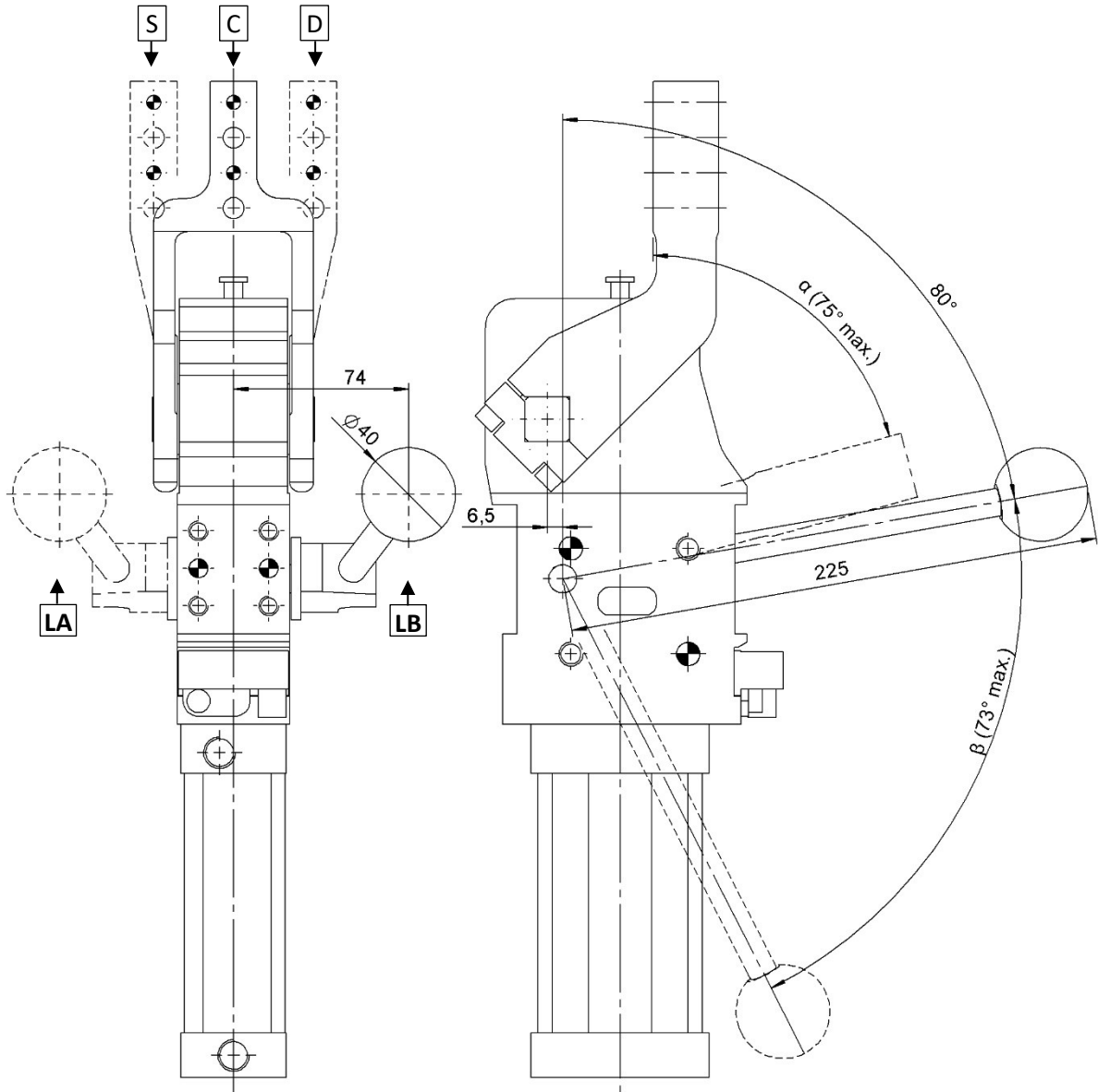
类型 Type	缸径 Cylinder bore	保持力 Holding moment	重量 Weight	工作气压 Working pressure	最大手动推力 Max. manual force
	[mm]	[Nm]	[Kg]	[bar]	[N]
CPLM50L...V3...S	50	1300	~ 4,5	4 - 8	200
CPLM63L...V3...S	63	1700	~ 5,5		



CPLM50L...H3...S / CPLM63L...H3...S

夹紧气缸, D. 50/63, 打开角度可调, 带手动机构, 夹臂水平安装, 夹臂高度 45mm

Clamp, D.50/63, Vario Op. Angle, Hand Lever, Horiz. Sym., Offset 45



α	16°	30°	46°	58°	75°
β	37°	47°	57°	63°	73°

手柄角度控制按 20°一格调整

Manual control adjustable in steps of 20°

#公差: 定位销孔 ± 0.02 , 螺纹孔 ± 0.1

#Tolerances: dowel holes ± 0.02 , screw holes ± 0.1

类型 Type	缸径 Cylinder bore	保持力 Holding moment	重量 Weight	工作气压 Working pressure	最大手动推力 Max. manual force
	[mm]	[Nm]	[Kg]	[bar]	[N]
CPLM50L...H3...S	50	1300	~ 4,5	4 - 8	200
CPLM63L...H3...S	63	1700	~ 5,5		

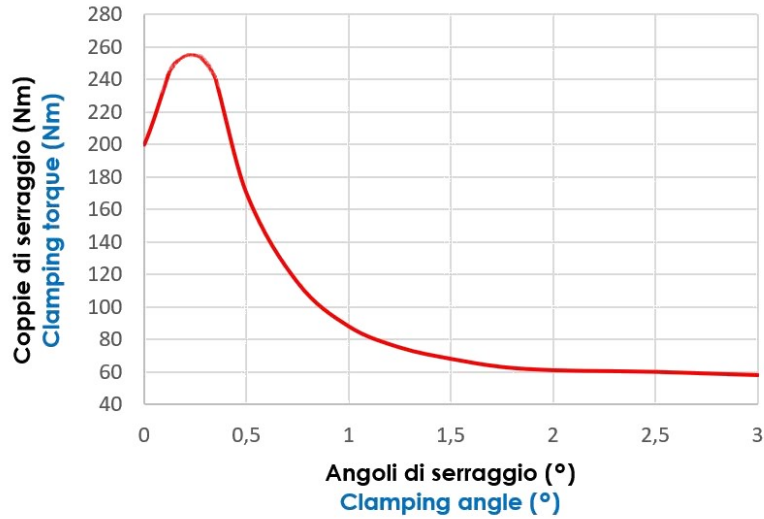


CPL50 图表.

Diagrams CPL50.

夹紧力矩 (Nm)

Clamping torque (Nm)

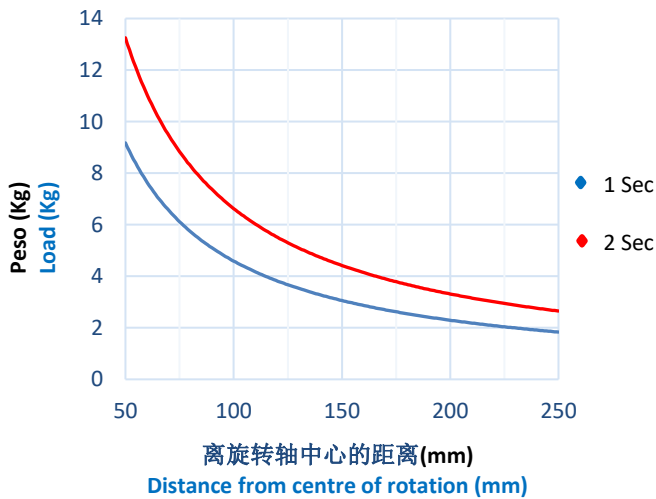


最大夹紧力矩 (5 bar): **250 Nm**.

Max. clamping torque (5 bar): **250 Nm**.

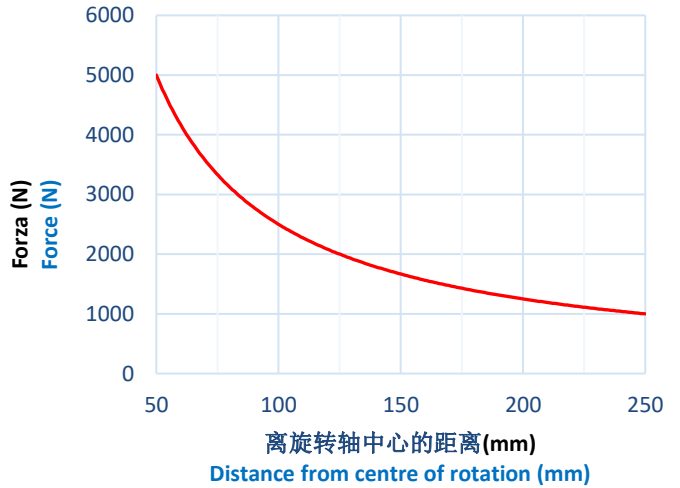
5bar 气压夹臂最大承受负载 (Kg)。

Max. load applicable on the arm (Kg) at 5 bar.



5bar 气压最大承受力(N)。

Max. force applied (N) at 5 bar.



类型 Type	最大重力力矩 Max. torque By weight [Nm]		最大偏心力矩 The max torque for applications with the load out of axis [Nm]	
	1 sec	2 sec	1 sec	2 sec
CPL 50	4.5	6.5	3.6	5.2

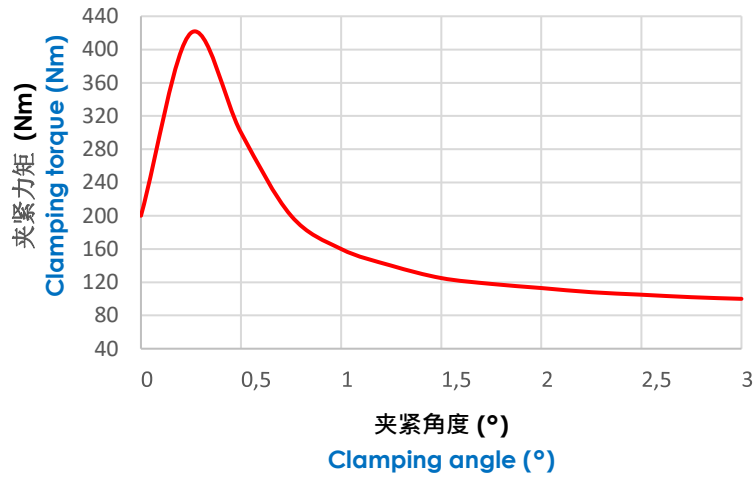


CPL63 图表.

Diagrams CPL63.

夹紧力矩 (Nm)

Clamping torque (Nm)

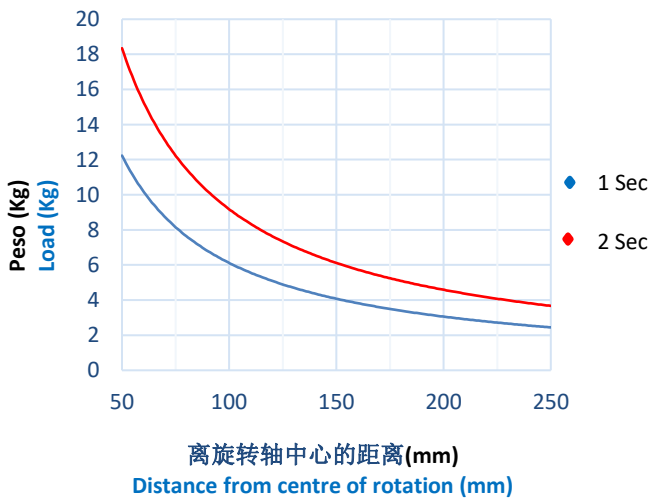


最大夹紧力矩 (5 bar): **420 Nm.**

Max. clamping torque (5 bar): **420 Nm.**

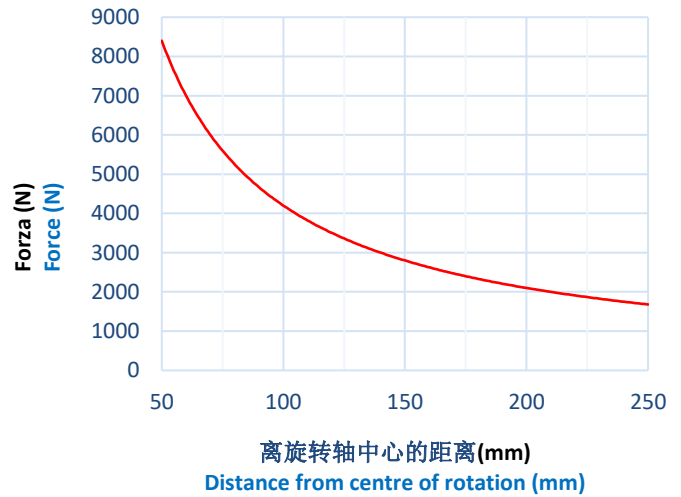
5 bar 气压夹臂最大承受负载 (Kg).

Max. load applicable on the arm (Kg) at 5 bar.



5 bar 气压最大承受力 (N).

Max. force applied (N) at 5 bar.



类型 Type	最大重力力矩 Max. torque By weight [Nm]		最大偏心力矩 The max torque for applications with the load out of axis [Nm]	
	1 sec	2 sec	1 sec	2 sec
CPL 63	6.0	9.0	4.8	7.2



M12 电感式接近开关原理图 (cod. 09127/.../C).

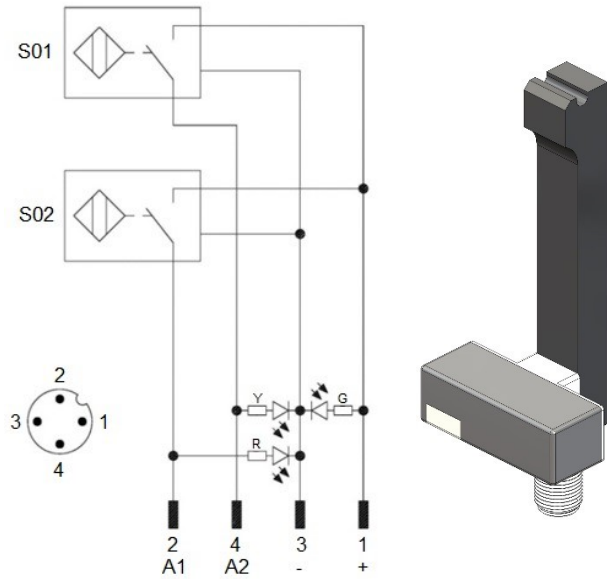
Diagram for M12 inductive proximity switch (cod. 09127/.../C).

技术参数：

- 输出类型: PNP;
- 输入电压: 10-30 VDC;
- 最大换向电流: 150 mA;
- 消耗电流: < 20 mA;
- 电压差: < 1,8 V
- 温度范围: -25° / 70° C.

Technical data:

- Output type: PNP;
- Feeding voltage: 10-30 VDC;
- Max. commutating current: 150 mA;
- Power supply: < 20 mA;
- Voltage drop: < 1,8 V;
- Temperature range: -25° / 70° C.



S01 = 打开信号

S01 = opening signal

S02 = 夹紧信号

S02 = closing signal

Y = 黄色 LED / yellow LED

G = 绿色 LED / green LED

R = 红色 LED / red LED

1 = 棕色线 / brown wire

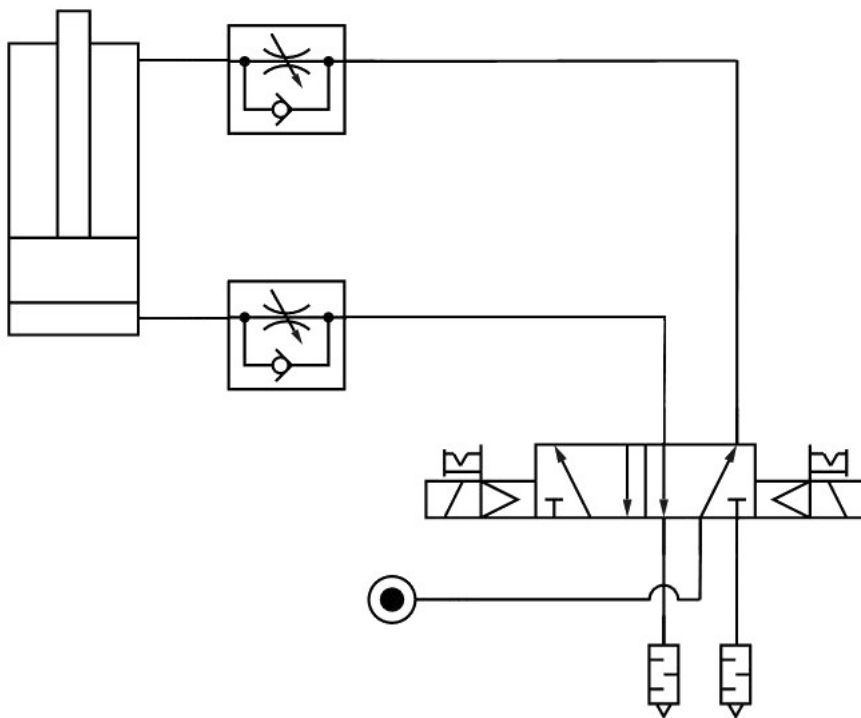
2 = 黑色线 / black wire

3 = 蓝色线 / blue wire

4 = 白色线 / white wire

气路图.

Pneumatic plan.





操作说明

Operating instructions.

调整打开角度.

- 让夹臂处于打开状态; (图. 1)
- 卸下传感器下面的 M6 插口螺丝; (图. 2)
- 插入最大 $\varnothing 5$ 的六角扳手, 推压弹簧, 施力 $\geq 80\text{N}$;(图.3)
- 保存压住弹簧的状态, 手动移动夹臂位置到需要的角度;
- 释放弹簧让组件自动耦合.

Opening angle change.

- Bring the clamp arm in the opening position; (Image 1)
- Unscrew the M6 socket screw below the inductive sensor; (Image 2)
- Put a key with \varnothing max. 5 mm into the hole, and push the spring applying a force ≥ 80 N; (Image 3)
- Keep pushing on the spring and move the clamp arm manually to the desired position;
- Release the spring to allow the automatic coupling of the components.

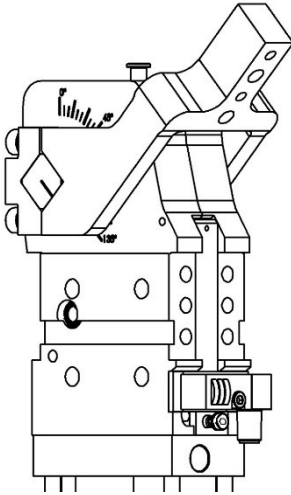


图 1
Image 1

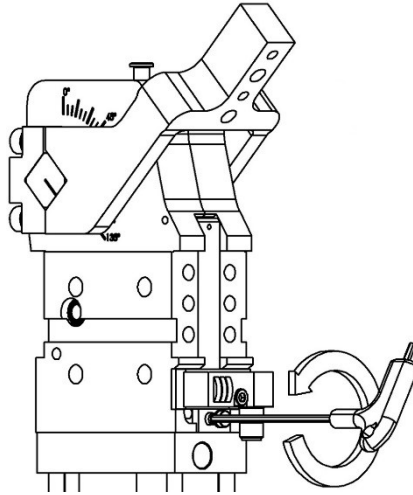


图 2
Image 2

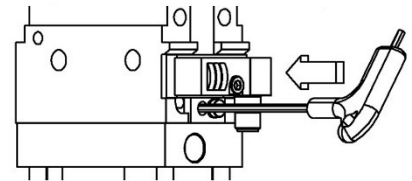


图 3
Image 3

打开角度.

Opening angles.

类型 Type	打开角度 / Opening angles																	
	2,5	4	6	8	10	13	16	19	22	26	30	34	38	42	46	50	54	58
CPL...V1 CPL...V3	•	•	•	•	•	•	•	•	•	•	•	•	•	•	•	•	•	•
CPL...H1 CPL...H3	•	•	•	•	•	•	•	•	•	•	•	•	•	•	•	•	•	•
CPL...H1...S CPL...H3...S	•	•	•	•	•	•	•	•	•	•	•	•	•	•	•	•	•	•
CPL...V1...S	•	•	•	•	•	•	•											
CPL...V3...S	•	•	•	•	•	•	•	•	•	•								

类型 Type	打开角度 / Opening angles																
	62	67	71	75	79	83	87	91	95	99	103	107	112	117	122	128	135
CPL...V1 CPL...V3	•	•	•	•	•	•	•	•	•	•	•	•	•	•	•	•	•
CPL...H1 CPL...H3	•	•	•	•	•	•	•	•	•	•	•						
CPL...H1...S CPL...H3...S	•	•	•	•													



防掉落机构.

Retaining clip.

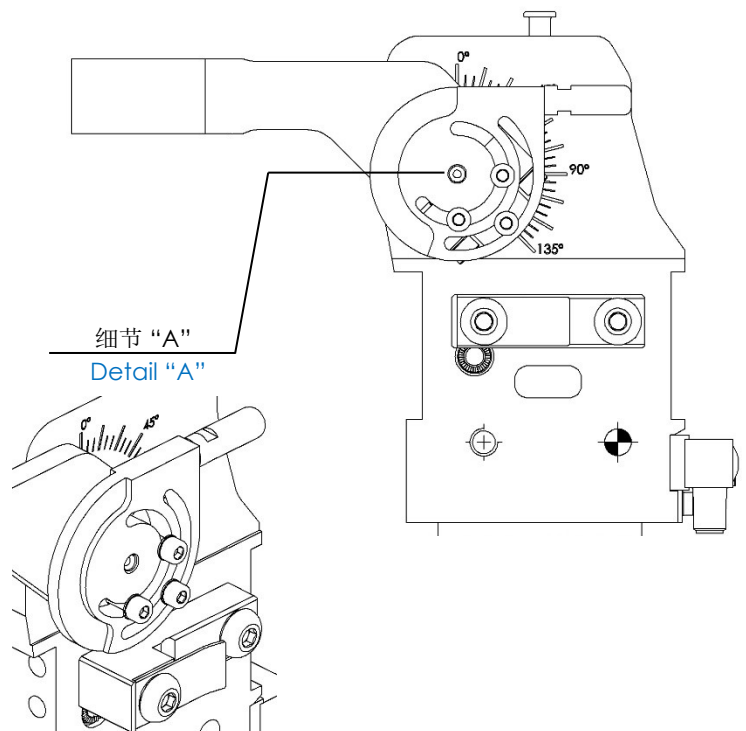
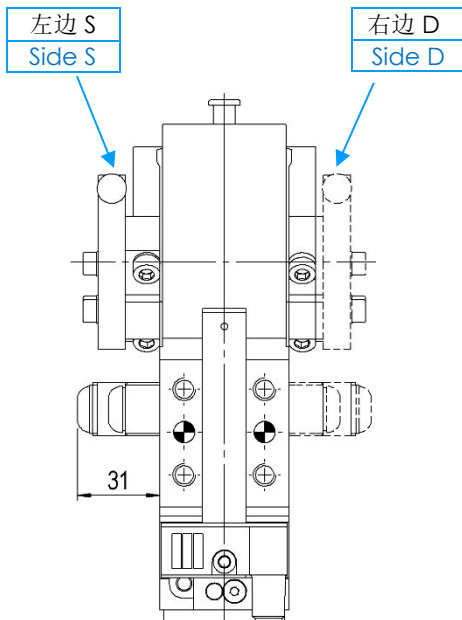
这个装置 (细节“A”) 应用于气缸上确保在打开位置时气动回路里没有供气的情况下夹臂位置固定不动。
(备注: 禁止超过夹臂最大力矩).

The device (detail “A”) applied on the clamp ensure, in opening position and when there isn't air in the pneumatic net, that arm doesn't change its position.
(NOTE: Not exceed the max. torque applicable on the lever).

订货举例

Ordering example.

AL 50	-	D
<div style="border: 1px solid #0070C0; padding: 5px; margin: 10px auto; width: 80%;"> <p>气缸类型: Clamp type:</p> <p>50: CPL / CPLM50 63: CPL / CPLM 63</p> </div>		<div style="border: 1px solid #0070C0; padding: 5px; margin: 10px auto; width: 80%;"> <p>装置安装方位: Side where apply the device:</p> <p>D = 右边 right side S = 左边 left side</p> </div>



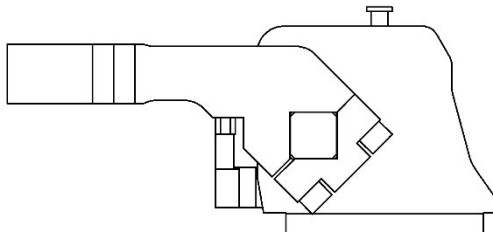


外部夹臂硬限位.

External Arm hard stop.

若选此硬限位机构请务必在订单中标明型号，因为此机构不能后续添加安装。

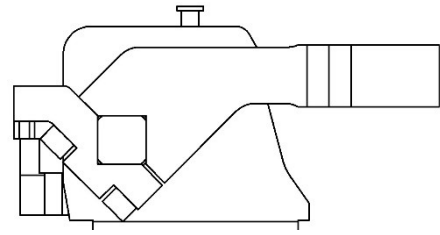
The presence of the external arm hard stop must be chosen at the order, because it cannot be added later.



订货举例 / **Ordering example**

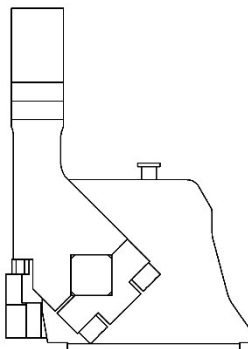
CPL50 TV1...

CPL63 TV1...



CPL50 TV1...S...

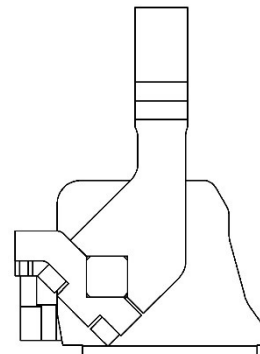
CPL63 TV1...S...



订货举例 / **Ordering example**

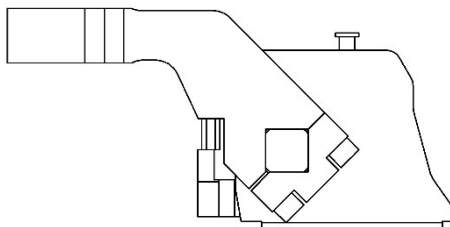
CPL50 TH1...

CPL63 TH1...



CPL50 TH1...S...

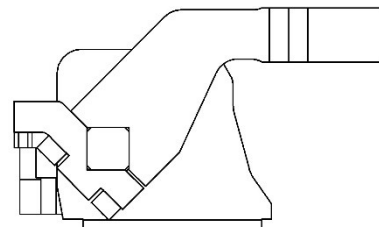
CPL63 TH1...S...



订货举例 / **Ordering example**

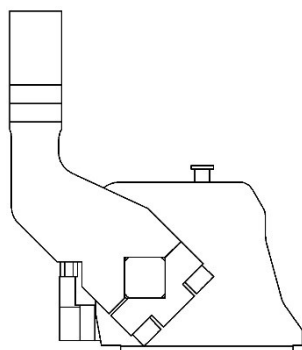
CPL50 TV3...

CPL63 TV3...



CPL50 TV3...S

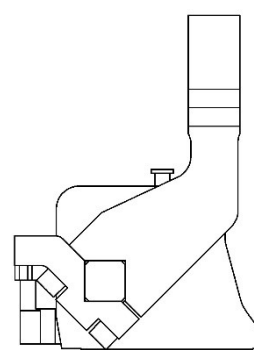
CPL63 TV3...S



订货举例 / **Ordering example**

CPL50 TH3...

CPL63 TH3...



CPL50 TH3...S

CPL63 TH3...S



备件.

Spare parts.

配套元件 # Kit	图片 Picture	描述 Description	型号 Model	代号 Article
配套夹臂 Arm assembly		夹臂 V1C / H1C / V1CS / H1CS Arm V1C / H1C / V1CS / H1CS	CPL50	08981/C
			CPL63	08980/C
		夹臂 V1D / H1S / V1SS / H1DS Arm V1D / H1S / V1SS / H1DS	CPL50	08981/DX/C
			CPL63	08980/DX/C
		夹臂 V1S / H1D / V1DS / H1SS Arm V1S / H1D / V1DS / H1SS	CPL50	08981/SX/C
			CPL63	08980/SX/C
		夹臂 V3C / H3C / V3CS / H3CS Arm V3C / H3C / V3CS / H3CS	CPL50	09132/C
			CPL63	09128/C
		夹臂 V3D / H3S / V3SS / H3DS Arm V3D / H3S / V3SS / H3DS	CPL50	09132/DX/C
			CPL63	09128/DX/C
		夹臂 V3S / H3D / V3DS / H3SS Arm V3S / H3D / V3DS / H3SS	CPL50	09132/SX/C
			CPL63	09128/SX/C
接近开关 Proximity switch		VEP电感式接近开关 (0°) Inductive proximity switch VEP (0°)	CPL50	09127/1/C
			CPL63	09127/2/C
密封套装 Seals kit		用于气缸的密封组件 Seal components for pneumatic cylinder	CPL50	SCR-CPL50
			CPL63	SCR-CPL63
气缸 Pneumatic cylinder		完整气缸 Complete pneumatic cylinder	CPL50	08984/C
			CPL63	08985/C
手柄 Manual control lever		带手柄控制的气缸CPLM... Lever manual control pneumatic clamp CPM...	CPL50	09107/50/C
			CPL63	09107/63/C

